

THE WORLD IS HERE



No.1 UNIVERSITY
IN INDIA WITH THE HIGHEST NUMBER OF
INTERNATIONAL STUDENTS



**TOP 4%
UNIVERSITIES
IN ASIA**

STUDENTS FROM 95+ COUNTRIES HAVE EXPERIENCED SHARDA



EXPLORE A MYRIAD OF OPPORTUNITIES AT A **CAMPUS** SPREAD OVER

63 ACRES



1023 PATENTS PUBLISHED

412 GRANTED



1800+ BEDS SUPER-SPECIALTY TEACHING AND RESEARCH HOSPITAL



DELHI-NCRS ONLY UNIVERSITY WITH

43% FEMALE STUDENTS



34000+ SUCCESSFUL ALUMNI WORLDWIDE

“The World is Here, here are You?”



SHARDA UNIVERSITY

Experience the joy of being a part of India's truly global university

Sharda University over the years has become one of the leading centres of education, research and innovation in the Delhi NCR region. Established through an act of the State Legislature of Uttar Pradesh (14 of 2009), Sharda University offers over **135+ UGC recognised programmes** in various disciplines. Sharda University was recently been **accredited with an A+ by NAAC** which puts it among the 5% of select higher education institutions in India.

It is the only global University in India that has seen **students from 95+ countries** experience world-class facilities, and has **300+ global academic partnerships**. Sharda University offers a truly international learning environment & produces achievers across the globe. That's why it is said,



WHY STUDY AT SHARDA UNIVERSITY

TOP GLOBAL FACULTY

- Learn from over 1100+ teaching faculty with global experience.
- Find new ideas through expert talk by Nobel Laureates.
- Experience learning from faculty sourced from renowned Universities of USA, UK, Greece, Singapore, Ireland, Germany, Italy, China, Finland, etc.
- Discover quality teaching through faculty certified by National Skills Development Corporation (NSDC)

GLOBAL OUTREACH

- Get a truly global experience through tie-ups with 300+ global Universities.
- Interact with students from across the globe.
- Pursue joint research projects with Universities from across the globe.
- Benefit from credit transfer-degree programmes, semester exchange programmes (zero tuition fee), short-term programmes, summer programmes, cultural experience programmes and internship programmes

TAKING STARTUPS TO THE NEXT LEVEL

- Sharda Launchpad is approved as a business incubator by MSME
- Collaboration with StartUp Incubation and Innovation Centre, IIT Kanpur

FOCUS ON PERSONALITY TRANSFORMATION

- Discover a new you through various personality grooming and enhancement programmes.
- Sharda Skills provides coaching to students who want to prepare for various competitive exams like UPSC, CAT etc. within the campus after University hours/weekends.
- Learn to ace placement interview through various mock interview sessions.

FULFILLING DREAMS THROUGH SCHOLARSHIPS

- Upto 50% Scholarship to realise career dreams.
- 7515 students studying with Scholarship and Freeship worth 44.5 Million USD in 2023-24.
- Fee waiver Benefit for economically weaker students to help them realise their career dreams.

WORLD-CLASS INFRASTRUCTURE

- Explore a myriad of opportunities at a campus spread over 63 acres.
- Experiment at Hi-tech labs and research centres.
- Explore a fully WI-FI campus, AC classrooms, AV aids, and numerous indoor and outdoor sports facilities.
- Eat healthy at many on-campus cafeterias.
- Experience home away from home while staying at on-campus residences.
- 1800+ Bedded super-speciality teaching and research hospital



Faculty/Student



18500+
Students



43%
Female



57%
Male



75%
Undergraduate



25%
Masters/Doctoral



1100+
Faculty



50%
Female



50%
Male



600+
MNC's Corporate
Visited



34000+
Alumni Network
World-wide



35% Faculty
Members are alumni of
top 200 Global Universities



1.7Cr.
Highest Package
in Academic year
2025-26



Upto
50%
Scholarship



95+ Countries's students
have experienced Sharda

Research



1023
Patents
Published



412
Patents
Awarded



6703
Research
Papers



3884
Book and
Book chapters

International Collaborations



95+
Countries represented
by students



300+
Global academic
partnerships



75+
Faculty & student
exchange collaborations



59th
World University
Ranking

WORLD-CLASS FACILITIES

CAMPUS



**wi-fi
Campus**



**AI Enabled
Campus**



**AC/Smart
Classroom**



Radio FM
Suno Sharda 90.8 FM



**Laundry
Services**



**24x7 CCTV
Security**



Library



**State of Art
Laboratories**



**Multiple
Auditoriums**



**NCC
and NSS**



**Cultural
Societies**



Cafeterias
• Cafe Coffee Day • Subway • Dice & Sip
• Basil • Georgia • Uncle's Cafe • Aahar

HOSTELS



Girls

- Sarojini Hostel
- Kasturba Hostel
- Mother Teresa Hostel
- Mandela Hostel
- Indira Hostel



Boys

- Vivekanand Hostel
- Jawahar Hostel
- Tagore Hostel
- Vardhman Hostel

WELLNESS



Gymnasium



**Multi-Specialty
Hospital**



**24x7
Pharmacy**



**Psychological
Counseling**

SPORTS



**Badminton
Court**



**Table
Tennis**



**Basketball
Court**



**Cricket
Ground**



**Football
Ground**



**Volleyball
Court**

STARTUPS



**Sharda
Launchpad**



**Business
Incubator
by MSME**



Over 100 StartUps
have been supported by
Sharda Launchpad

TRAINING AND PLACEMENT



**Skill
Development**
by Sharda Skills



**Competitive
Exams** like UPSC,
SAT, GMAT, TOEFL




BANKING FACILITIES

**ICICI BANK
Branch** at Campus
and ATM Facilities




PRESTIGIOUS RECOGNITIONS & ACCREDITATIONS



59th

**WORLD UNIVERSITY
NATIONAL RANKING 2025**



87th

in
UNIVERSITY CATEGORY



**NATIONAL RANKING 2024
RESEARCH**

**14th OVERALL
12th PLACEMENT
7th RESEARCH**

**RANKED 3RD
IN NORTH INDIA AS PER
TIMES ENGINEERING RANKINGS**

Subject wise **SHARDA UNIVERSITY NIRF RANKING 2024** in India

11-50TH
in
INNOVATION

57TH
in
PHARMACY

101-125TH
in
MANAGEMENT

101-150TH
in
ENGINEERING

 <p>NBA NATIONAL BOARD OF ACCREDITATION</p>	<p><i>NBA accreditation in following Engineering UG Programmes:</i></p> <ul style="list-style-type: none"> B.Tech. (Computer Science Engineering) B.Tech. (Civil Engineering) B.Tech. (Mechanical Engineering) B.Tech. (Electrical & Electronics Engineering) B.Tech. (Electronics & Communication Engineering) B.Tech. (Biotechnology) 	 <p>Management Ranking 2025*</p> <p>4th Among the Top 40 Universities in India & Top 20 B-Schools in North India</p> <p>#14th Ranked among the top 100 B-School in India</p> <p>#11th Ranked in Placement among the Top 50 Institutes in India</p>	 <p>WORLD UNIVERSITY RANKINGS ASIA 2024</p> <p>RANKED #219TH*</p> <p>*SOUTH EAST ASIA</p>	 <p>PROUD TO BE PLACED IN EXCELLENCE BAND</p> <p>AIIA ASIA INSTITUTE OF INTEGRATED AND A WORLD LEADER IN HIGHER EDUCITY</p> <p>ARIIA RANKING 2021</p>
---	---	--	--	---




SHARDA-IIC
is listed among **top 10 Universities**
FOR THE NORTH REGION (NRO)
WITH 4-STAR RATING FOR THE YEAR 2020-21

★★★★

*Rated in the GOLD BAND with A Grade
(Higher Educational Institution of Excellence)*



ADVANCED E-LEAD CERTIFIED
E-Learning Certificate
for Academic Digitalisation



I-GAUGE
BIRLA COLLEGE & UNIVERSITY PATNA



**ACCREDITATION SERVICE
for
INTERNATIONAL SCHOOLS,
COLLEGES & UNIVERSITIES**

*Continuing its legacy as a world-class institution,
Sharda University has earned Membership status with ASIC, UK
for its commendable areas of operation.*



**SHARDA IS
RANKED 5TH
IN INDIA
FOR PATENTS**



Uttar Pradesh New & Renewable
Energy Development (UPNEDA)

**RANKED 1ST IN THE REGION FOR EFFORTS
TOWARDS ENERGY SAVING BY UPNEDA**

RECOGNITIONS & APPROVALS BY GOVERNMENT INSTITUTIONS & REGULATORY BODIES

Awarded Certificate of Excellence 2025 by The Times of India

Confederation of Indian Industry Industrial Innovation Awards 2024 'Top 5 Innovation Institute'

Awarded Most Internationally Diversified University in India at the International Education Excellence Awards 2019 by UNICA

Confederation of Indian Industry Industrial Innovation Awards 2024 'Top 5 Innovation Institute'

Sharda University is the ONLY university awarded by FICCI in the category of Excellence in Globalisation of Education



University Grants Commission (UG)



Dental Council of India (DCI)



Pharmacy Council of India (PCI)



National Council for Teacher Education (NCTE)



Indian Nursing Council (INC)



Bar Council of India (BCI)



Member of Association of Indian Universities



National Medical Commission Formally Medical Council of India



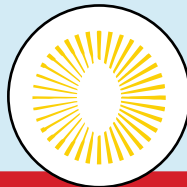
Council of Architecture (COA)



Department of Higher Education, Uttar Pradesh



Member of Association of Commonwealth Universities



Accreditation Service for International Schools, Colleges & Universities



SHARDA UNIVERSITY **UZBEKISTAN**

***The 1st independent International private university in Uzbekistan
approved under special Presidential decree***



Sharda University Uzbekistan has been established in line with Sharda's commitment to offer world class education to everyone. It is the first independent private university in Uzbekistan that is being envisioned to become the gateway for students from Eurasia. Students of Sharda University Uzbekistan share the legacy of Sharda, India's truly global university with 27% students from 95+ countries; which has over the years become one of the leading centres of education, research and innovation in Asia. In the next few years, the University will become the epicentre of future-focused education in various disciplines including Engineering, Management, Medical, Dental, Tourism and Hospitality, Law, Architecture, Design, Journalism & Mass Communication, Computer Applications, Basic Sciences, Nursing, Biotechnology, Food & Technology, Pharmacy, Physiotherapy, Paramedical, Education, Languages, Animation, Agriculture, Visual Arts and Stem Cell & Cancer Biology.

SHARDA UNIVERSITY

AGRA

Sharda University Agra carries forward the rich legacy of Sharda Group having its campuses in Mathura, Greater Noida & Uzbekistan. It is envisioned to become one of the leading centres of education, research and innovation.

Established under the Uttar Pradesh Private Universities Act, 2019 (U.P. Act no. 12 of 2019), Sharda University Agra offers 21+ UGC recognized programmes in various disciplines.

The Sharda University Agra occupies a central location on the NH-19, Agra-Delhi Highway, which is well connected from Delhi (NCR) to other parts of the country through Air, Rail and Road. The University is poised to cater some of the world's brightest minds who shall marshal the most innovative tools, techniques, technology and skills to address fundamental scientific questions and pressing societal challenges. University's extraordinary faculty and students shall be expanding their understanding of the universe and inventing the technologies of the future, with research interests from quantum science and engineering to bioinformatics and the nature of life itself, from human behavior and economics to energy and sustainability.



WHY INDIA?

India is an amalgamation of cultural diversity, innovation, and leadership. According to World Economy Ranking, India has attained the 4th largest economy in 2026. Some of the most prominent scientists, businessmen and CEOs are from India. This is because of the holistic education system that balances theory and practical learning, thus elevating the student to the global standard. India has the largest democracy that embraces people across all countries and ethnicities.

- **Fastest growing economy by the World Bank, IMF & CSO.**
- **Second fastest growing service sector in the world by CII & KPMG.**
- **India is the 7th largest country in the world and the largest democracy.**
- **The second largest pool of engineers and scientists are from India.**
- **India has the largest education system with top-ranking Universities.**
- **A multidimensional Education system with a perfect blend of theoretical & practical learning that includes innovative classes, industrial visits, seminars and alumni meets to keep up with the latest trends in the industry.**
- **India is the second largest English-speaking country in the world, enabling worldwide communication.**
- **A land where diversity meets culture, cuisine, festivals, exotic locations, languages and people from different backgrounds.**
- **Affordable cost of living, The cost of education in India is lower compared to other countries such as USA, Australia, and UK.**
- **Various historical inventions have been discovered and practiced in India. From the invention of zero, fiber optics, and architecture to games such as Chess.**
- **Yoga, which is one the most widely accepted practices in the world, originated in India.**



29+ YEARS OF ILLUSTRIOUS LEGACY

Established in 1995, Sharda Corporation is a multi-million-dollar conglomerate which is focused on building a better world through business operations in diverse areas like Education, Healthcare, Information Technology, StartUps, Engineering Equipment, Construction, Biotechnology, Hospitality and Skill Development. The Group is proud to be one of the drivers of change in building a world where intellectual minds will thrive, everyone will have access to good health, edifices of excellence will define the skyline and new age IT solutions will set new benchmarks.

With five campuses and 40 offices spread across 300 acres, Sharda Corporation is proud to shape the dreams of 30000+ students from 95+ countries. A journey that started with establishing North India's first engineering colleges in Anand & Mathura took a bigger shape with the setting up of Sharda University.

Campuses in Greater Noida & Agra, India and Andijan, Uzbekistan.

The 90,000+ flag bearers of Sharda across the globe are an apt reflection of an illustrious legacy to think beyond. The Group is touching the lives of 15 million people and has operations in India, Uzbekistan and plans to expand further to the other CIS countries and Africa.





1995

Established in 1995, the US \$ 500+ Million Sharda Group is focused on building a better world through business operations in diverse areas like Education, Healthcare, Information Technology, StartUps, Engineering Equipment, Construction, Biotechnology, Hospitality and Skill Development. The Group is proud to be one of the drivers of change in building a world where intellectual minds will thrive, everyone will have access to good health, edifices of excellence will define the skyline and new age IT solutions will set new benchmarks.

The Sharda Group comprises over 25 companies operating in seven business sectors: education, information technology, engineering equipment, construction, hospitality, healthcare, biotechnology and agro research. The Group has operations in India and Uzbekistan and plans to expand further to the other CIS countries and Africa.



The Sharda Group of Institutions was established in 1996 to bring world-class education to the youth who saw tremendous opportunities arising out of liberalisation. The first Engineering College, Hindustan College of Science and Technology was established on the Agra-Delhi Highway. The huge demand for seats by the students led to the expansion of the College into its second division by the name Hindustan Institute of Management and Computer Studies (HIMCS) in 1997. 1998 was the hat-trick year as SGI came up with a new College named Anand Engineering College, AEC, Agra.

2005

Established in 2005, Rishav Shelters has established itself as a world-class contractor, land developer and planner with several notable landmarks in construction including institutional buildings, hostels and offices. Rishav Shelters operates as a EPC Organization (Engineering, Procurement and Construction) relating to infrastructure projects and systems for construction work.



2006



**SHARDA
HOSPITAL**

SCHOOL OF
MEDICAL SCIENCE
& RESEARCH



Established in 2005, Rishav Shelters has established itself as a world-class contractor, land developer and planner with several notable landmarks in construction including institutional buildings, hostels and offices. Rishav Shelters operates as a EPC Organization (Engineering, Procurement and Construction) relating to infrastructure projects and systems for construction work.

2019



Established in 2019, Sharda University Uzbekistan is the first independent private university in Fergana valley that is being envisioned to become the gateway for students from Eurasia.



2009



Established in 2009, Sharda University has over the years become one of the leading centres of education, research and innovation in India with global recognitions and accreditations. The University prides in being the melting pot of various cultures from across the globe. The University has 14 Schools in Engineering, Management, Basic Science, Media, Law, Agriculture, Allied Health, Pharmacy, Medical, Dental, Architecture, Education, Humanities and Nursing.



2021



Established in 2021, Sharda World School is an initiative of the Sharda Group with interests in diverse areas. Sharda World school is set to emerge as a centre of excellence in Education with focus on continuous development of mind, body and soul, nurturing compassionate and creative global citizens.



2013



Established in 2013, Sharda Launchpad, the StartUp wing of Sharda University has over the last five years been serving as the springboard for students and budding entrepreneurs who are living the dream to make India self-reliant. Sharda Launchpad is the Business Incubator (BI) of MSME and has collaboration with IIT Kanpur for sharing of resources.

2016



Established in 2016, Sharda Tech is the IT wing of the Sharda Group. The company aspires to revolutionize the digital sector through cutting edge products and serves prestigious national and international brands. Sharda Tech delivers IT Services, Peoplesoft, Digital Marketing, Education and Healthcare solutions.

2024



ShardaCare
The Healthcity



Embracing the concept of a smart hospital, Sharda Care - The Healthcity is envisioned to revolutionize healthcare delivery through digitalization and automation. Sharda Care - The Healthcity, a 1800-beds facility is poised to transform healthcare with pioneering equipment and technology.

WORLD CLASS CAMPUS FACILITIES

Sharda University campus combines modern teaching and study spaces on 63 acres of landscaped greenery. At Sharda, you can study in a clean, healthy environment that combines the benefits of an active global lifestyle with the resources of an international University.

When you want to work together & make new friends you'll find yourself in a welcoming community filled with people from over 95+ countries. Our campus includes academics support, accommodation, sports, culture & entertainment-everything you need.



LABORATORIES



AUDITORIUMS



LIVELY ENVIRONMENT



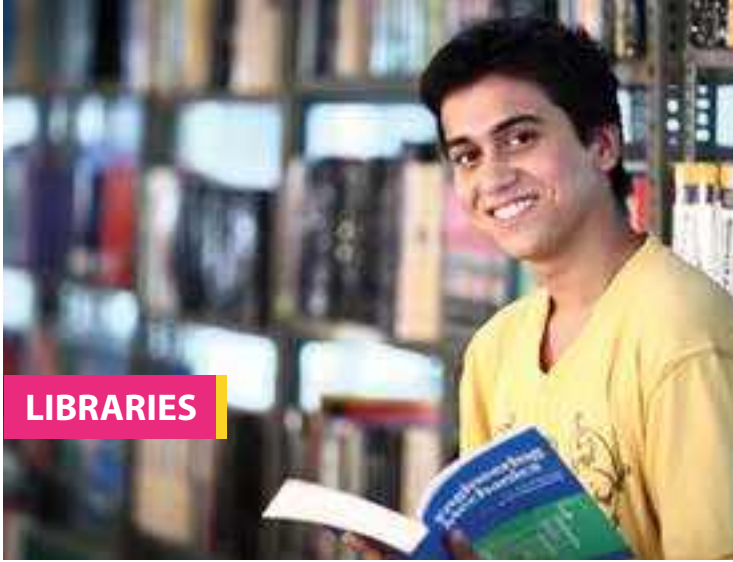
COMPUTER LAB



GYMNASIUM



LEARNING SPACE



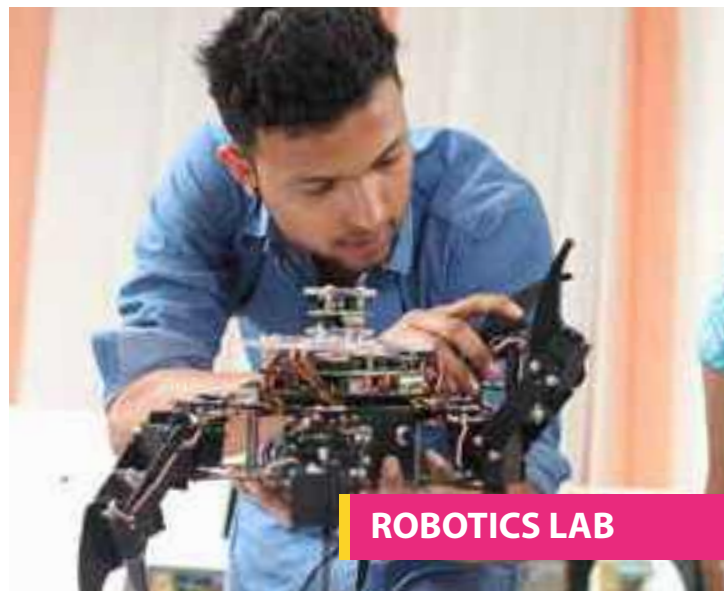
LIBRARIES



CAFETERIAS



SPORTS



ROBOTICS LAB



MEDICAL FACILITIES



IN CAMPUS RESIDENCES



MEDIA LAB

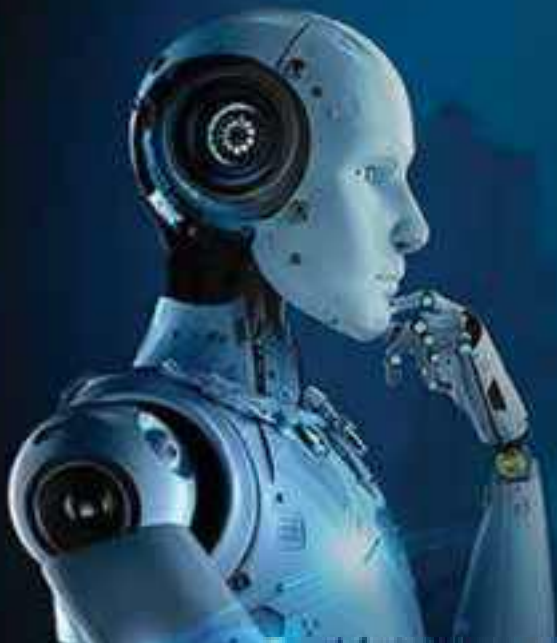
MDP MANAGEMENT DEVELOPMENT PROGRAM

(Capacity Building Programs)

The University has a management development program (capacity building programs) which is under the direction of the executive programs. Management Development Program (MDP) is carried out based on the latest management technologies and practices at the Sharda campus for Businesses, industry professionals and officials of different committees.

Sharda University is in collaboration with governments of several countries for capacity building programs. The university scholarship students from different countries such as: Burkina Faso, Ivory Coast, Ethiopia, Rwanda, Thailand, Gambia, Afghanistan, Vietnam, Bhutan, Sri Lanka, Malawi and Nigeria.





SHARDA UNIVERSITY INTEGRATES

A.I.

WITH THE POWER OF HUMAN INTELLIGENCE

- *Future focus on Semiconductor Research & Development aligning with India's tech advancements.*
- *AI for all programmes: Technical and Non-Technical & Cutting-edge research centres in AI, Robotics, & Healthcare.*
- *Support for AI-based startups through Sharda Launchpad, the on-campus innovation incubator.*
- *Global tie-ups with the University of Maryland, USA, & Universidad Autonoma de Tamaulipas, Mexico to train students in new & emerging areas of AI.*
- *Industry tie-up with 'Ultipa' to explore the opportunities for internship & placement.*
- *Graduates placed in leading companies like Citi Bank, Barclays, FedEx, Ernst & Young, Tech Mahindra and more.*

SUPER COMPUTER FOR NEW RESEARCH



SHARDA UNIVERSITY PROUDLY
OWNS SUPER COMPUTER FOR
RESEARCH IN A.I. & EMERGING
TECHNOLOGIES

Sharda University has established Sharda NextGen Cyber & Quantum Systems Facility with an **nVIDIA DGX H100 system**, fourth generation of the most powerful supercomputer for machine learning and artificial intelligence. In the NCR region Sharda University is the first educational institution and very few Universities of India to acquire this top of the line supercomputing system for AI model building, training & inferencing. Apart from AI, this system can be utilized for other High Performance Computing tasks such as Molecular Dynamics simulations for bioinformatics & drug discovery and Quantum Computing simulations among others. Since Sharda University has two hospitals with state of the art equipment, & data from these hospitals is being used to develop AI models for diagnostic purposes.

One of the very few universities in India to have DGX H100 Super Computer for new age research. The gold standard for:

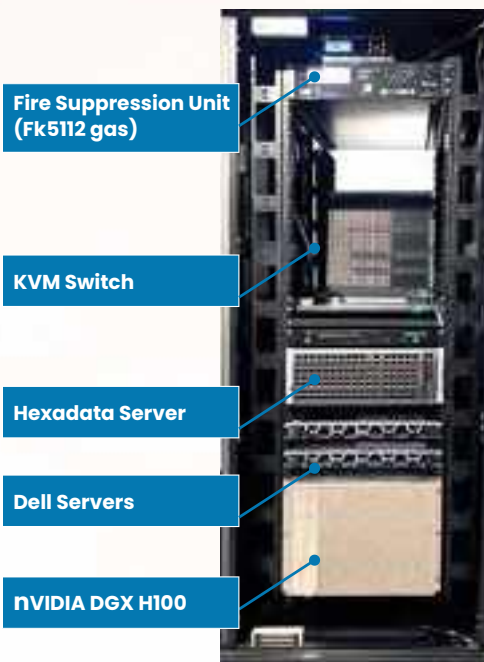
- A.I. models simulation
- Bio-medical and drug discoveries
- Scientific simulations
- Genomics & Proteomics Studies
- Quantum Computing simulation projects

Multi-disciplinary Research Centres:

- Sharda NextGen Cyber & Quantum Systems Facility
- Centre for Artificial Intelligence in Medicine, Imaging & Forensics
- Centre for Cyber Security and Cryptology
- Centre for Solar Cells and Renewable Energy
- Central Instrumentation Facility DST-FIST Life Sciences

AI-ML, Big-Data Processing & High Performance Computing Landscape at Sharda University:

- Medical Imaging (MRI, CT, PET, Microscopy)
- Brain functional MRI & Fiber Tractography
- Speech Forensics and Musical Acoustics
- Quantum Computing and Quantum Machine Learning
- Large Language Model Fine Tuning & Training
- Bioinformatics (Protein Docking, simulations & Phylogenetic Analysis)
- Molecular Dynamics & Density Functional Theory AI models for Space & Solar Physics
- Knowledge Graphs/Semantic Web
- Geospatial Information Systems (GIS)



YOUR PASSPORT TO THE WORLD

“Find global learning opportunities through 300+ Global Academic Tie Ups.”

PATHWAY TO GLOBAL LEARNINGS

CREDIT TRANSFER PROGRAM

From Sharda University to Partner Universities-Pathway to Foreign Degrees:

Sharda University runs credit transfer agreements with several high-ranked international universities in the UK, USA, Australia, France, Cyprus, Israel and Switzerland. Interested students can start their studies in Sharda University and transfer to the partner university in Year 1 or in Year 2 or in Year 3. Credit transfer students graduate with the degree of the partner university. Credit transfer from Partner University to Sharda University Students from other universities can transfer their credits from their home university to Sharda University. The student is required to pay tuition fees accommodation/food fees and registration and any other applicable fees. The student will graduate with a the degree from Sharda University.

Credit transfer from Partner University to Sharda University:

Students from other universities can transfer their credits from their home university to Sharda University. The student is required to pay tuition fees accommodation/food fees and registration and any other applicable fees. The student will graduate with a the degree from Sharda University.

SEMESTER EXCHANGE PROGRAM @ZERO TUITION FEE*

(DURATION: ONE SEMESTER)

In the semester exchange program Sharda University students and students from partner universities across the globe can transfer for one semester to the collaborating institution and vice versa. Sharda University students pay zero tuition fees in the partner universities. Credits of courses passed in the semester exchange will be transferred from Sharda University and vice versa after the courses have been mapped & approved in advance by both Sharda University & the partner universities.



300+ TIE-UPS WITH LEADING GLOBAL UNIVERSITIES

- IQS-Ramon Lull University, Spain
- Babes Bolyai University, Romania
- Bishop Grosseteste University, UK
- American University of London - Richmond, UK
- University of Applied Sciences Bremerhaven, Germany
- Baden-Wuerttemberg Cooperative State University Lorrach, Germany,
- University of Cincinnati, USA
- University of Juiz de Fora, Brazil
- University of Zagreb, Croatia
- University of South Florida, USA
- Western Sydney University, Australia
- University of Cuenca, Equator
- University of East London, UK
- University of Queensland, Australia
- University of Ljubljana, Slovenia
- University of Illinois, USA
- University of Cyprus, Cyprus
- University of Applied Sciences Bremerhaven, Germany
- Polytechnic of Leiria, Portugal
- University of East Anglia, UK
- University of Sunderland, UK
- Shawnee State University, USA
- Queen Mary University of London, UK
- National Polytechnic Institute, Mexico
- University of Missouri, USA
- Mendel University, Czech Republic
- Manisa Celal Bayar University, Turkey
- University of Dubrovnik, Croatia
- Computer Engineering Institute, France
- University of Cordoba, Spain
- Curtin University, Australia
- Financial University, Russia
- Berdyansk State University, Ukraine
- Heriot Watt University, UK
- Myongji University, South Korea



and many more...



SHARDA LAUNCHPAD FEDERATION

Sharda Launchpad Federation a sec. 8 entity established in year 2013 promoted by Sharda University aims to support the shared vision of Government of India and University towards building a bit more vibrant culture of innovation and entrepreneurship for campus, city and nation.

With a house of thousands of learners, researchers, academicians and practitioners of several disciplines of learning, Sharda Launchpad Federation as a dedicated professional platform enables potential individuals, teams and early stage start-ups to access need based resources, domain expertise, Technology and business mentorship, vast entrepreneurial stakeholders network and a dynamic ecosystem to advance the entrepreneurial journey and build scalable market ready sustainable ventures of future.

SLPF as an entrepreneurial ecosystem is a dedicated facility with approx. 7000 sq.ft of area, contemporary working space with necessary technology infrastructure led by a dedicated full time leadership team to consistently advance the purpose of the incubator and design platforms to encourage, mentor and support promising ideas/early stage start-ups. The incubator as an entrepreneurial ecosystem, is working towards expanding to sector agonistic support system though prime focus areas of start up support are-Agriculture, Healthcare, Drones, EV's, Block Chain, IoT Application and SDG aligned innovations.

Ecosystem partners and its associates

The incubator is widely connected to vast pool of internal and external ecosystems, organisations, Experts, Mentors, Investors and Funds to accelerate the start-up success.

ECOSYSTEM PARTNERS



AN EARLY STAGE INCUBATOR AND
ENTREPRENEURIAL ECOSYSTEM



Learn more about current projects stakeholders and programmes
at <https://launchpad.sharda.ac.in/events-list>



SHARDA HOSPITAL

1800+ BEDDED **SUPER SPECIALITY HOSPITAL & MEDICAL COLLEGE**

Sharda Hospital is one of the largest hospitals in Delhi National Capital Region (NCR) which offers medical care par excellence to the patients at the most affordable cost. The hospital has 1800+ beds including casualty, trauma, critical care and various intensive care units like ICCU, CTVS ICU, MICU, SICU, PICU, NICU.

Sharda Hospital provides comprehensive healthcare in departments such as Cardiology, Cardiothoracic Surgery, Neurosciences, Joint Replacement, Spine Surgery, Orthopaedics, Urology, Nephrology, advance Ophthalmological and Dental surgeries including Maxillofacial and Craniofacial surgeries and Gastroenterology besides all the other general specialities. It also provides comprehensive physiotherapy and rehabilitation services.

Sharda Hospital's International Patient Services Department provides best of the hospitality and care to the international patients with a specially dedicated floor brimming with internationally accredited medical facilities.



**10 Modular
Operation theaters**



**100,000+
Surgeries**



**300,000+
Ipd admissions**



**2 Million+
Consultations**



**Dedicated team
For International
Patients**

SUPER SPECIALITY

- DEPARTMENT OF NEURO SCIENCES
- DEPARTMENT OF CARDIOLOGY
- DEPARTMENT OF ORTHOPEDIC & JOINT REPLACEMENT
- DEPARTMENT OF ONCOLOGY & ONCOSURGERY
- DEPARTMENT OF NEPHROLOGY
- DEPARTMENT OF UROLOGY
- DEPARTMENT OF OBSTETRICS & GYNAECOLOGY
- DEPARTMENT OF INFERTILITY (IVF)
- DEPARTMENT OF PLASTIC & AESTHETIC SURGERY
- DEPARTMENT OF DENTAL SCIENCES
- DEPARTMENT OF GASTROENTEROLOGY
- DEPARTMENT OF CRITICAL CARE & ANAESTHESIOLOGY
- DEPARTMENT OF MINIMAL ACCESS SURGERY
- DEPARTMENT OF OPHTHALMOLOGY & PHACO SURGERY
- DEPARTMENT OF INTERNAL MEDICINE



UPTO 50% SCHOLARSHIP AVAILABLE

GLOBALLY RECOGNISED DEGREE PROGRAMMES FOR A GLOBAL CAREER

SHARDA SCHOOL OF COMPUTING SCIENCE & ENGINEERING (SSCSE)

Courses	Duration	Yearly Fee (USD)	Scholarship % (Every Year)	Yearly Fee - USD (After Scholarship)
B.Tech Computer Science Engineering (CSE)	4	4200	20%	3360
B.Tech (CSE) - Full Stack Development in association with Xebia Academic Alliance	4	4200	20%	3360
B.Tech (CSE) - Artificial Intelligence & Machine Learning	4	4200	20%	3360
B.Tech (CSE) - Artificial intelligence & Data Science	4	4200	20%	3360
B.Tech (CSE) - AI Enabled Fintech	4	4200	20%	3360
B.Tech Information Technology (IT)- Medical AI & Informatics	4	4200	20%	3360
B.Tech (CSE) - Cyber Security & Forensic in association with EC - Council	4	4200	20%	3360
B.Tech Information Technology (IT)	4	4000	20%	3200
Bachelor of Computer Applications (BCA)	3	3200	20%	2560
BCA - Artificial Intelligence and Machine Learning	3	3200	20%	2560
BCA - Cloud Computing and IoT	3	3200	20%	2560
BCA - Specialization in Cyber Security	3	3200	20%	2560
B.Sc. - Computer Science	3	4000	50%	2000
B.Sc. - (CS) - Artificial Intelligence and Machine Learning	3	4000	50%	2000
B.Sc. - (CS) - Cloud Computing and IoT	3	4000	50%	2000
B.Sc. - (CS) - Cyber Security	3	4000	50%	2000
B.Sc. - Information Technology	3	4000	50%	2000
Master of Computer Applications (MCA)	2	5000	50%	2500
MCA for Working Professionals	2	5000	50%	2500
MCA- AI & ML	2	5000	50%	2500
MCA - Data Engineering & AI	2	5000	50%	2500
MCA - Cyber Security	2	5000	50%	2500
M.Sc. - Computer Science	2	5000	50%	2500
M.Sc. - Computer Science (AI & ML)	2	5000	50%	2500
M.Sc. Cyber Security	2	5000	50%	2500
M.Sc. Data Engineering & AI	2	5000	50%	2500
M.Tech (CSE) - Networking & Cyber Security	2	5000	50%	2500
M.Tech (CSE) - Software Engineering	2	5000	50%	2500
M.Tech (CSE) - Data Science	2	5000	50%	2500
M.Tech (CSE) for Working Professionals	2	5000	50%	2500
Ph.D. in all Computing Science & Engineering (Full Time/Part Time)	MIN. 3 Years	5000	50%	2500

SHARDA SCHOOL OF ENGINEERING & SCIENCE (SSES)

Courses	Duration	Yearly Fee (USD)	Scholarship % (Every Year)	Yearly Fee - USD (After Scholarship)
B.Tech Electrical and Electronics Engineering (EEE)	4	4000	50%	2000
B.Tech (EEE) Specialization in Renewable Energy Systems	4	4000	50%	2000
B.Tech (EEE) Specialization in Advance Electric Vehicle in association with L&T EduTech.	4	4000	20%	3200
B.Tech Electronics & Communication Engineering (ECE)	4	4000	50%	2000
B.Tech (ECE) Specialization in Robotics & Automation	4	4000	50%	2000
B.Tech (ECE) Specialization in VLSI Design & Technology	4	4000	50%	2000
B.Tech (ECE) Specialization in Semiconductor Design framework for Industrial ICs in association with L&T EduTech.	4	4000	20%	3200
B.Tech Electronics & Computer Engineering	4	4000	50%	2000
B.Tech Electronics & Computer Engineering - AI and Machine Learning	4	4000	50%	2000
B.Tech Mechanical Engineering (ME)	4	4000	50%	2000
B.Tech (ME) Specialiaion in Advanced Electric Vehicles in association with L&T EduTech.	4	4000	20%	3200
B.Tech (ME) - Mechatronics	4	4000	50%	2000
B.Tech Civil Engineering	4	4000	50%	2000

Courses	Duration	Yearly Fee (USD)	Scholarship % (Every Year)	Yearly Fee - USD (After Scholarship)
B.Tech Civil Engineering - Multi Modal Transportation Infrastructure with AI/ML in association with L&T EduTech.	4	4000	20%	3200
M.Tech (CE) - Environmental Engineering	2	5000	50%	2500
M.Tech (CE) - Structural Engineering	2	5000	50%	2500
M.Tech (CE) - Construction Management	2	5000	50%	2500
M.Tech (CE) - Geotechnical & Earthquake Engineering	2	5000	50%	2500
M.Tech (CE) - Remote Sensing & GIS	2	5000	50%	2500
M.Tech Civil for Working Professionals	2	5000	50%	2500
M.Tech (EEE)- Instrumentation & Control	2	5000	50%	2500
M.Tech (EEE) - Industrial Automation	2	5000	50%	2500
M.Tech (EEE)- Power System Engineering	2	5000	50%	2500
M.Tech (ECE) - Digital Communication	2	5000	50%	2500
M.Tech (ECE) - VLSI Technology	2	5000	50%	2500
M.Tech - Mechanical Engineering	2	5000	50%	2500
B.Sc. / B.Sc.(Hons/Research) - Physics	3 / 4 yrs	3600	50%	1800
B.Sc. / B.Sc.(Hons/Research) - Physics - Computational Physics	3 / 4 yrs	3600	50%	1800
B.Sc. / B.Sc.(Hons/Research) - Physics - Renewable Energy	3 / 4 yrs	3600	50%	1800
B.Sc. / B.Sc. (Hons/Research) - Mathematics	3 / 4 yrs	3600	50%	1800
B.Sc. / B.Sc. (Hons/Research) - Chemistry	3 / 4 yrs	3600	50%	1800
B.Sc. / B.Sc. (Hons/Research) - Computational Chemistry	3 / 4 yrs	3600	50%	1800
B.Sc. / B.Sc. (Hons/Research) - Chemistry with Minor in Data Analytics/ Machine Learning/ Entrepreneurship	3 / 4 yrs	3600	50%	1800
B.Sc. / B.Sc. (Hons/Research) - Bio Chemistry	3 / 4 yrs	4000	50%	2000
B.Sc. / B.Sc. (Hons/Research) - Bio Chemistry with Minor in Forensic Science & Serology	3 / 4 yrs	4000	50%	2000
B.Sc. / B.Sc. (Hons/Research) - Environmental Science	3 / 4 yrs	4000	50%	2000
B.Sc. / B.Sc. (Hons/Research) - Data Science & Analytics	3 / 4 yrs	3600	50%	1800
M.Sc. - Chemistry	2	5000	50%	2500
M. Sc. Chemistry (specialization in Organic/Inorganic/Physical)	2	5000	50%	2500
M.Sc. - Mathematics	2	5000	50%	2500
M.Sc. - Physics	2	5000	50%	2500
M.Sc. - Biochemistry	2	5000	50%	2500
M.Sc.- Data Science & Analytics	2	5000	50%	2500
M.Sc. - Statistics	2	5000	50%	2500
M.Sc. - Water Resources & Environmental Management	2	5000	50%	2500
M.Sc. - Environmental Science	2	5000	50%	2500
Ph.D. in all Engineering & Sciences (Full Time/Part Time)	Min. 3 years	5000	50%	2500

SHARDA SCHOOL OF BIO-SCIENCE & TECHNOLOGY (SSBT)

Courses	Duration	Yearly Fee (USD)	Scholarship % (Every Year)	Yearly Fee - USD (After Scholarship)
B.Tech BioTechnology	4	4000	20%	3200
B.Tech (BT) Genetic Engineering	4	4000	20%	3200
B.Tech (BT) Stem Cell & Tissue Engineering	4	4000	20%	3200
B.Tech (BT) Agricultural & Plant Biotechnology	4	4000	20%	3200
B.Tech (BT) Computational Biology	4	4000	20%	3200
B.Tech Food Technology	4	4000	20%	3200
B.Tech Food Technology - Food Safety & Quality Assurance	4	4000	20%	3200
B.Tech BioTechnology - Fermentation Technology	4	4000	20%	3200
B.Sc. / B.Sc.(Hons/Research) - Zoology	3 / 4 yrs	3800	50%	1900
B.Sc. / B.Sc. (Hons/Research) - BioTechnology	3 / 4 yrs	4200	50%	2100
B.Sc. / B.Sc. (Hons/Research) - Microbiology	3 / 4 yrs	4200	50%	2100
B.Sc. / B.Sc. (Hons/Research) - Food Science & Technology	3 / 4 yrs	4200	50%	2100
M.Tech BioTech - Animal BioTechnology	2	5000	50%	2500
M.Tech BioTech - Plant BioTechnology	2	5000	50%	2500
M.Tech BioTech-Genetic Engineering	2	5000	50%	2500

SHARDA SCHOOL OF BIO-SCIENCE & TECHNOLOGY (SSBT)

Courses	Duration	Yearly Fee (USD)	Scholarship % (Every Year)	Yearly Fee - USD (After Scholarship)
M.Tech Bio-Engineering & Bio-Informatics	2	5000	50%	2500
M.Tech Food Process Technology	2	5000	50%	2500
M.Sc. - BioTechnology	2	5000	50%	2500
M.Sc. - Food Science & Technology	2	5000	50%	2500
M.Sc. - Microbiology	2	5000	50%	2500
MSc. BioInformatics & BioTechnology	2	5000	50%	2500
M.Sc. Zoology	2	5000	50%	2500
M.Sc. Virology	2	5000	50%	2500
Ph.D. in all Bio-Science & Technology (Full Time/Part Time)	Min. 3 years	5000	50%	2500

SHARDA SCHOOL OF BUSINESS STUDIES

Courses	Duration	Yearly Fee (USD)	Scholarship % (Every Year)	Yearly Fee - USD (After Scholarship)
B.Com. / B.Com. (Hons./Research)	3 / 4 yrs	4800	50%	2400
B.Com. Finance & Accounting with ICA	3	5200	50%	2600
B.Com. International Accounting & Finance (with ACCA, UK)	3	5200	50%	2600
BBA / BBA - (Hons./Research) Marketing Management	3 / 4 yrs	3600	20%	2880
BBA / BBA - (Hons./Research) International Business	3 / 4 yrs	3600	20%	2880
BBA / BBA - (Hons./Research) Human Resource Management	3 / 4 yrs	3600	20%	2880
BBA / BBA - (Hons./Research) Finance	3 / 4 yrs	3600	20%	2880
BBA / BBA - (Hons./Research) Health Care & Hospital Administration	3 / 4 yrs	3600	20%	2880
BBA / BBA - (Hons./Research) Entrepreneurship & Family Business	3 / 4 yrs	3600	20%	2880
BBA / BBA - (Hons./Research) Operations & Supply Chain Management	3 / 4 yrs	3600	20%	2880
BBA / BBA - (Hons./Research) Business Analytics	3 / 4 yrs	3600	20%	2880
BBA - Finance & Accounting (with ACCA, UK)	3	3600	20%	2880
MBA - Marketing Management	2	6000	20%	4800
MBA - International Business	2	6000	20%	4800
MBA - Human Resource Management	2	6000	20%	4800
MBA - Finance	2	6000	20%	4800
MBA - Business Analytics	2	6000	20%	4800
MBA - Health Care & Hospital Administration	2	6000	20%	4800
MBA - Operations & Supply Chain Management	2	6000	20%	4800
MBA - Dual Specialization	2	7000	20%	5600
Executive MBA	2	3600	50%	1800
Ph.D. in Management/Business & Commerce (Full Time/Part Time)	Min. 3 years	5000	50%	2500

SHARDA SCHOOL OF MEDIA, FILM & ENTERTAINMENT

Courses	Duration	Yearly Fee (USD)	Scholarship % (Every Year)	Yearly Fee - USD (After Scholarship)
B.A. / B.A. (Hons./Research)- Film, Television & OTT Production	3 / 4 yrs	3600	20%	2880
B.A. / B.A. (Hons./Research)- Journalism & Mass Communication	3 / 4 yrs	3400	20%	2720
B.Sc. / B.Sc. (Hons./Research) - Animation,VFX & Gaming Design	3 / 4 yrs	3400	20%	2720
M.A. - Journalism & Mass Communication	2	3400	20%	2720
M.A. - Advertising, Public Relations and Corporate Communication	2	3400	20%	2720
Ph.D. in Mass Communication (Full Time/Part Time)	Min. 3 years	5000	50%	2500

SHARDA SCHOOL OF LAW

Courses	Duration	Yearly Fee (USD)	Scholarship % (Every Year)	Yearly Fee - USD (After Scholarship)
BBA LL.B.(Hons.) Integrated	5	3800	20%	3040
B.A. LL.B.(Hons.) Integrated	5	3800	20%	3040
LL.M. - Corporate & Commercial Law	1	3400	20%	2720
LL.M. - Human Rights Law	1	3400	20%	2720
LL.M. - International Law	1	3400	20%	2720
LL.M. - Criminal Law	1	3400	20%	2720
Ph.D. in Law (Full Time/Part Time)	Min. 3 years	5000	50%	2500

SCHOOL OF MEDICAL SCIENCE

Courses	Duration	Yearly Fee (USD)	Scholarship % (Every Year)	Yearly Fee - USD (After Scholarship)
Msc. Medical Anatomy	3	4000	20%	3200
Msc. Medical Bio Chemistry	3	4000	20%	3200
Msc. Medical Microbiology	3	4000	20%	3200
Msc. Medical Pharmacology	3	4000	20%	3200
Msc. Medical Physiology	3	4000	20%	3200
Ph.D. in Medical (Full Time/Part Time)	Min. 3 years	5000	50%	2500

SHARDA SCHOOL OF NURSING SCIENCE & RESEARCH

Courses	Duration	Yearly Fee (USD)	Scholarship % (Every Year)	Yearly Fee - USD (After Scholarship)
B.Sc. (Nursing)	4	3200	20%	2560
B.Sc. (Post Basic Nursing)	2	3200	0	3200
M.Sc. (Nursing) - Community Health Nursing	2	3600	0	3600
M.Sc. (Nursing) - Obstetrics & Gynecology Nursing	2	3600	0	3600
M.Sc. (Nursing) - Child Health Nursing (Paediatrics)	2	3600	0	3600
M.Sc. (Nursing) - Medical Surgical Nursing	2	3600	0	3600
M.Sc. (Nursing) - Psychiatric	2	3600	0	3600
Ph.D. in Nursing (Full Time/Part Time)	Min. 3 years	5000	50%	2500

SHARDA SCHOOL OF HUMANITIES & SOCIAL SCIENCES

Courses	Duration	Yearly Fee (USD)	Scholarship % (Every Year)	Yearly Fee - USD (After Scholarship)
B.A. / B.A. (Hons./Research) - English	3 / 4 yrs	3800	50%	1900
B.A. / B.A. (Hons./Research) - History	3 / 4 yrs	3800	50%	1900
B.A./ B.A. (Hons./Research) - Sociology	3 / 4 yrs	3800	50%	1900
B.A./ B.A. (Hons./Research) - Geography	3 / 4 yrs	3800	50%	1900
B.A./ B.A. (Hons./Research) - Economics	3 / 4 yrs	3400	50%	1700
B.A. / B.A. (Hons./Research)- Political Science	3 / 4 yrs	3800	50%	1900
B.A. / B.A. (Hons./Research)- Political Science with International Relations	3 / 4 yrs	3800	50%	1900
B.A./ B.A. (Hons./Research) - Psychology	3 / 4 yrs	3800	50%	1900
M.A. - English	2	3400	50%	1700
Master of Arts - Modern History	2	3800	50%	1900
Master of Arts - Political Science / Sp. International Relations	2	3800	50%	1900
Master of Arts - Sociology	2	3800	50%	1900
Master of Arts - Geography	2	3800	50%	1900
Master of Arts - Applied Psychology	2	3800	50%	1900
Master of Arts - International Relations	2	3800	50%	1900
Master of Arts - Economics	2	3800	50%	1900
Master of Arts - Clinical Psychology	2	3800	50%	1900
Advance Certificate of Proficiency (English)	1	3000	50%	1500
Certificate of Proficiency (English)	6 Months	1000	0	1000
Basic Certificate of Proficiency (English)	3 Months	800	0	800
Ph.D. - Humanities & Social Sciences (Full Time/Part Time)	Min. 3 years	5000	50%	2500

SHARDA SCHOOL OF DESIGN

Courses	Duration	Yearly Fee (USD)	Scholarship % (Every Year)	Yearly Fee - USD (After Scholarship)
Bachelor Of Design (Communication Design)	4	4000	20%	3200
Bachelor Of Design (Interior Design)	4	4000	20%	3200
Bachelor Of Design (Fashion Design)	4	4000	20%	3200
Masters in Design - Interior Design	2	6000	50%	3000
Masters in Design - Fashion Design	2	6000	50%	3000
Ph.D. in Design (Full Time/Part Time)	Min. 3 years	5000	50%	2500

SCHOOL OF DENTAL SCIENCE

Courses	Duration	Yearly Fee (USD)	Scholarship % (Every Year)	Yearly Fee - USD (After Scholarship)
Bachelor of Dental Surgery (BDS)	4+1	6000	0	6000
Master of Dental Surgery (MDS) in various specializations	3	12000	0	12000
Ph.D. in Dental (Full Time/Part Time)	Min. 3 years	5000	50%	2500

SHARDA SCHOOL OF ALLIED HEALTH SCIENCES

Courses	Duration	Yearly Fee (USD)	Scholarship % (Every Year)	Yearly Fee - USD (After Scholarship)
Bachelor of Physiotherapy (BPT)	4+1	3600	20%	2880
B.Sc. in Radiological Imaging Techniques (Radiology/CT/MRI)	3+1	3200	20%	2560
B.Sc. in Medical Laboratory Technology (Techniques) (BMLT)	3+1	3200	20%	2560
B.Sc. - Cardiovascular Technology	4	3200	20%	2560
B.Sc. - Forensic Science	3	3200	20%	2560
Bachelor of Optometry	4+1	3200	20%	2560
Bachelor of Science (Nutrition & Dietetics)	3+1	3200	20%	2560
Master of PhysioTherapy (MPT) - Orthopaedics	2	4000	20%	3200
Master of PhysioTherapy (MPT) - Neurology	2	4000	20%	3200
Master of PhysioTherapy (MPT) - CardioPulmonary	2	4000	20%	3200
Master of PhysioTherapy (MPT) - Sports	2	4000	20%	3200
M.Sc. (Clinical Research)	2	5000	50%	2500
M.Sc. (Forensic Science)	2	5000	50%	2500
M.Sc. (Nutrition & Dietetics) Clinical Nutrition	2	5000	50%	2500
M.Sc. (Nutrition & Dietetics) Food Science & Nutrition	2	5000	50%	2500
M.Sc. (Nutrition & Dietetics) Public Health Nutrition	2	5000	50%	2500
Ph.D. in Allied Sciences (Full Time/Part Time)	Min. 3 years	5000	50%	2500

SHARDA SCHOOL OF PHARMACY

Courses	Duration	Yearly Fee (USD)	Scholarship % (Every Year)	Yearly Fee - USD (After Scholarship)
Bachelor of Pharmacy (B.Pharma)	4	4000	0	4000
Diploma in Pharmacy (D.Pharma)	2	2500	0	2500
Pharm D	5+1	6000	20%	4800
M Pharm (Pharmaceutics)	2	3400	20%	2720
Ph.D. in Pharmacy (Full Time/Part Time)	Min. 3 years	5000	50%	2500

ADDITIONAL FEES

Admission and Procedural Charges - USD 500 which includes Provisional Admission Fee Visa letter/Bonafide Letter Charges 1st year Examination Fee 1st year Registration Fee 1st year Medical Insurance Charges 1st year Medical Check up Charges AIU certification /equivalence assistance only FRRO/Police verification/ Visa Extension Assistance only.

2nd Year Onwards - USD 250 which includes Registration Fee Examination Fee Medical Insurance Renewal Charges FRRO/ Visa Extension Assistance.

HOSTEL FEE

For Girls Category	Annual Fee
2 Seater AC Room with Non-Veg Food (Attached Washroom & Without Balcony)	USD 4000
2 Seater Non-AC Room with Non-Veg Food (Attached Washroom & Without Balcony)	USD 3000
3 Seater AC Room with Non-Veg Food (Attached Washroom & Balcony)	USD 3300
3 Seater Non-AC Room with Non-Veg Food (Attached Washroom & Balcony)	USD 2500
For Boys Category	Annual Fee
2 Seater AC Room with Non-Veg Food (Attached Washroom & Without Balcony)	USD 4000
2 Seater AC Room with Non-Veg Food	USD 3250
2 Seater Non-AC Room with Non-Veg Food (Attached Washroom & Without Balcony)	USD 3000
2 Seater Non-AC Room with Non-Veg Food	USD 2450
3 Seater AC Room with Non-Veg Food	USD 3050
3 Seater Non-AC Room with Non-Veg Food	USD 2300

Note:

- *Hostel Security of USD 200 (Refundable) for Non-AC and Non-Attached washroom and*
- *USD 300 (Refundable) for AC and/or attached washroom.*
- *Complimentary Laundry service of 20 washes and each wash of 8 kg shall be available to all the inside campus hostel residents.*
- *The room will be allotted on first come first serve basis after payment of hostel fee.*
- *For more hostel option details kindly visit "Accommodation Fee" section of university website.*

**Hostel fees may differ, For more details please refer Website.*

FEE DEPOSIT DETAILS

All International/Foreign Nationals/NRI students are advised to deposit/remit their fees in the bank as per details mentioned below:

BENEFICIARY BANK NAME & ADDRESS

For Payment in USD



ICICI Bank Details:
Krishna Apra Royal Plaza D2 EAcb Alpha 1
Greater Noida Uttar Pradesh-201306 India

Account No :- 025406000017
Swift Code :- ICICINBBCTS
IFSC Code :- ICIC0000254

For Payment in INR



ICICI Bank Details:
Krishna Apra Royal Plaza D2 EAcb Alpha 1
Greater Noida Uttar Pradesh-201306 India

Account No :- 025405005507
Swift Code :- ICICINBBCTS
IFSC Code :- ICIC0000254

Note: International Students are advised to submit below details at su.finance.info@sharda.ac.in and global@sharda.ac.in after remitting the fund in the University account to get timely credit for their fee payments with the below details:

- System ID • Student Name • Program • Email ID • Contact no • Amount remitted in Foreign Currency • Swift Advice*

*Swift advice is the documentary evidence about the confirmation of the remittance of funds which will be issued by the remitter bank to the applicant.

Bank deposit slip is not a proper document to confirm the payment with the bank.



ADMISSION FLOW CHART



List of Required Documents:

- Secondary/10th/O-Level Marksheet.
- Senior Secondary/12th/ A-Level Marksheet.
- Bachelor's degree and transcripts (if applying for Masters program)
- Passport copy or National ID
- Filled Application Form

Age Criteria:

As per University Academic Council and in accordance with UGC Guidelines.

OR

ONLINE ADMISSION:

- Fill the application form available on the website under the tab "Apply Now"
- Upload the supporting academic documents & submit the filled application form.
- Kindly note you have entered the correct email address as the same will be used for further communication

If eligible, Personal/Telephonic/ Skype interview if ineligible, the best possible course shall be suggested.

Payment of USD 500 by the student by Bank transfer or payment at the University Campus.

Clearance of the pending fees within the stipulated time period.

Commencement of Classes.

WALK-IN ADMISSION: (Sharda University Campus & Counseling Centers in Various Countries)

- Get fee details
- Fill the Common Admission form with photo
- Submit all the relevant educational transcripts & certificates along with the filled in admission form

Post Selection, the University shall issue the offer letter & the same will be sent on your registered email Id.

After confirmation of payment, the University shall Issue the acceptance Letter & bonafide for Visa process.

Post- arrival Registration process at the University campus.

Eligibility Verification and equivalence.

HOW TO APPLY @ SHARDA UNIVERSITY



Shining STARS OF SHARDA

Sharda University's brilliance in education over the years has resulted in its Alumni being placed in top-tier corporations around the world.

Embark on a journey through the illustrious alumni hall of fame at Sharda University, where brilliance knows no bounds. From pioneers in technology to trailblazers in business, our alumni stand as beacons of success, illuminating the path for future generations.

Explore the narratives of our shining stars who have soared to remarkable heights, leaving an indelible mark on their respective fields and the world at large.



Karma Dema
Bhutan Civil Service
Bhutan



Paul Dominic Jarry Jr
RTI International
Liberia



Bwalya C Mayoshi
Mopani Copper Mines Plc
Zambia



Ariel Kalenga
DT Engineer, Huawei
Democratic Republic of Congo



Aissatou Diallo
Access Bank Guinée
Guinea



Clarence Erenes Gandawa
Springfield Research University
Zimbabwe



Abdoul Moumouni Sawadogo
Greenverse pvt.Ltd
Burkina Faso



Umar Mohammed Abatcha
Ict Skills Traning School
Gashua, Yobe State
Nigeria



Radji Fatim
TELUS Health | TELUS Santé
Cote D'Ivoire



Seraphiner John Gao
Financial Analyst
Tanzania



Mangani Daudi Kazembe
Cyber Security Officer
Malawi



Yashaswee Thapa
Associate Advocate
Nepal



Ahsanullah Mohammad Akba
Finance Assistant, AADA Kabul
Afghanistan



Norbu Jamtsho
Bhutan Civil Service
Bhutan



Bannah M. Bestman
National Public Health
Institute of Liberia
Liberia



Salma Jamal Mohamed
Maxaas General Hospital
Somalia



Sona Suwal
Ministry of Water Supply
Nepal



Plezzant C Johnson
Fortune Ventures Inc
Liberia



Innocent Barnet Mijoya
Malawi Adventist University
Malawi



Womba Lukama
Liquid Intelligent Technologies
Zambia



Leah Y. Nsemwa
Universal Tribes
Tanzania



Ruby Belbase Chhetri
Padma Media Group
Nepal



Ujjawal Devkota
Nic Asia Bank
Nepal



Dr. Bahrullah Saif
VP, Acacia University,
Arizona



Ajeet Tiwari
China Commu. Construction
Nepal



Mamoudou Korse Balde
International Organization
Guinea



Sudikshya Timalsina
Vogue Optical London
Canada



Galay Samprud
Royal Civil Service Commission
Bhutan

The Stars
Keep Shining at
Sharda @Global
Higher Education



Miyanda Shamba
Zambia
University Of Ankara In Ankara, Turkey



Nassor Suleiman Nassor
Tanzania
NFSU, India



Mohammad Erfan Sharifi
Afghanistan
Loughborough University, UK



Pudensiana Patrick Nsangizyo
Tanzania
IIIT Hyderabad, India



Delwende Pierre Wilfried Nacoulma
Burkina Faso
Carleton University, Canada



Ngonidzashé Mathew
Zimbabwe
Federation University, Australia



Jaymina Murdamootoo
Mauritius
Pondicherry University, India



Neksumi Musa
Nigeria
Federal University Of
Technology Yola, Nigeria



Samiratou Bonkougou
Burkina Faso
Université De Sherbrooke, Canada



Sonam Tshering Lama
Nepal
Macquerie University, Australia



Vibudana K. Samarawickrama
Sri Lanka
AIBT, Bangladesh



Nomel Haymes Axel
Côte d'Ivoire
Abitibi-Témiscamingue
CollegeQubec, Canada



Adesh Nidhi Tiwary
Nepal
Amity University, India



Ahmad Shadab Muzafarkhil
Afghanistan
Sharda University, India



Nomel Haymes Axel-Elie Junior Ako
Cote D'Ivoire
Cegep De, Abitibi, Canada



Suyog Khana
Nepal
VIT Vallore, India



Winkar Nfor Rosemary
Cameroon
Amity University, India



Sujan Ghosh
Bangladesh
University Canada West, Canada



Joshua Yona Kipandw
Nigeria
EAST UNIVERSITY, Cyprus



Ashmit Singh
Nepal
London University of
Westminster



Okou lilian ewane jefferson yahi
Côte d'Ivoire
LLM-Corporate law in GD Goenka



Vibudana Kasungi Samarawickrama
Bangladesh
Asian Institute Of Business & Technology



Olga Paul Ferrante
Tanzania
Zanzibar University

HOW TO REACH US

Sharda University is easily accessible as it is located on the Noida Expressway, (Uttar Pradesh) and is well connected by rail and road; having a reasonable distance from the airports, bus stands, railway stations etc.

From New Delhi Airport (Distance 52 Km Approx.)

Option 1: Hire a taxi/Cab for Sharda University Campus

Plot No. 32,34, Knowledge Park-III, Greater Noida(Delhi-NCR)

Option 2:

- Catch a direct Metro train from Airport terminal 1 metro station to Botanical Garden Metro Station.
- Get down at Botanical Garden metro station and take a bus for pari chowk from outside station
- Get down at pari chowk and take an autorickshaw for Sharda University



Scan the QR Code to Get the Location





📍 Plot No. 32, 34, Knowledge Park-III, Greater Noida (Delhi-NCR) India

📞 +91-8448896176, +91-8800998881

✉️ global@sharda.ac.in 🌐 www.sharda.ac.in

FOR MORE INFORMATION ON ADMINISTRATION PROCEDURES



SCAN AND APPLY

Follow us on Social Media platforms



Disclaimer: All material in this brochure is the copyright of Sharda University. The University makes every effort to ensure that all the information contained here is accurate. The information and material contained in these pages, and the terms, conditions and descriptions therein are subject to change as the Information Brochure has been prepared well in advance. Please note the updated information available on the University Website before you make any informed decision.