



Internationally Recognised Degrees, Approved by UGC, Govt. of India
Greater Noida, Delhi-NCR, India



THE WORLD IS HERE

No.1 UNIVERSITY
IN INDIA WITH THE HIGHEST NUMBER OF
INTERNATIONAL STUDENTS



**TOP 4%
UNIVERSITIES
IN ASIA**

STUDENTS FROM **95+ COUNTRIES** HAVE EXPERIENCED SHARDA

www.sharda.ac.in



SHARDA UNIVERSITY

Experience the joy of being a part of
India's truly global university

Sharda University over the years has become one of the leading centres of education, research and innovation in the Delhi NCR region. Established through an act of the State Legislature of Uttar Pradesh (14 of 2009), Sharda University offers over **130+ UGC recognised programmes** in various disciplines. Sharda University has recently been **accredited A+ by NAAC** which puts it among 5% of select higher education institutions in India.

Being the only global University in India that has seen **students from 95+ countries** experience world-class facilities, and has **270+ global academic partnerships**. Sharda University offers a truly international learning environment & produces achievers across the globe. That's why it is said,

“The World is Here,
Where are You?”

WHY STUDY AT SHARDA UNIVERSITY

TOP GLOBAL FACULTY

- Learn from over 900+ teaching faculty with global experience.
- Find new ideas through expert talk by Nobel Laureates.
- Experience learning from faculty sourced from renowned Universities of USA, UK, Greece, Singapore, Ireland, Germany, Italy, China, Finland, etc.
- Discover quality teaching through faculty certified by National Skills Development Corporation (NSDC)

GLOBAL OUTREACH

- Get a truly global experience through tie-ups with 259+ global Universities.
- Interact with students from across the globe.
- Pursue joint research projects with Universities from across the globe.
- Benefit from credit transfer-degree programmes, semester exchange programmes (zero tuition fee), short-term programmes, summer programmes, cultural experience programmes and internship programmes

TAKING STARTUPS TO THE NEXT LEVEL

- Sharda Launchpad is approved as a business incubator by MSME
- Collaboration with StartUp Incubation and Innovation Centre, IIT Kanpur

FOCUS ON PERSONALITY TRANSFORMATION

- Discover a new you through various personality grooming and enhancement programmes.
- Sharda Skills provides coaching to students who want to prepare for various competitive exams like UPSC, CAT etc. within the campus after University hours/weekends.
- Learn to ace placement interview through various mock interview sessions.

FULFILLING DREAMS THROUGH SCHOLARSHIPS

- Upto 100% Scholarship to realise career dreams.
- 7515 students studying with Scholarship and Freeship worth 44.5 Million USD in 2023-24.
- Get easy education loans from SBI, ICICI, Canara Bank & Bank of Maharashtra.
- Fee payment EMI option also available through Grayquest & FinancePeer.
- Fee waiver Benefit for economically weaker students to help them realise their career dreams.

WORLD-CLASS INFRASTRUCTURE

- Explore a myriad of opportunities at a campus spread over 63 acres.
- Experiment at Hi-tech labs and research centres.
- Explore a fully WI-FI campus, AC classrooms, AV aids, and numerous indoor and outdoor sports facilities.
- Eat healthy at many on-campus cafeterias.
- Experience home away from home while staying at on-campus residences.
- 1600+ Bedded super-speciality teaching and research hospital

Delhi-NCRs only
University with
43%
female students

Chemistry's
**HUMAN
ANATOMY**
for Dental Students



PRESTIGIOUS RECOGNITIONS & ACCREDITATIONS



nirf RANKING 2023
INNOVATION RANK
 11-50

nirf RANKING 2023
PHARMACY RANK
 62

nirf RANKING 2023
PLACED AT 87th POSITION
IN UNIVERSITY CATEGORY

nirf RANKING 2023
MANAGEMENT BAND
 101-125

nirf RANKING 2023
ENGINEERING RANK
 150-200

Rated in the GOLD BAND with A Grade
 (Higher Educational Institution of Excellence)

R
World Institutional
RANKING

SHARDA IS RANKED 5TH IN INDIA
 in the number of patents granted
 As per India Today issue dated 10th August, 2020

QS **WORLD UNIVERSITY RANKINGS**
 ASIA | 2024

Rated by

GREAT PLACE TO STUDY

FORBES INDIA MARQUEE

Awarded

QS I-GAUGE
 INDIAN COLLEGE & UNIVERSITY RATING
GOLD

SHARDA UNIVERSITY
 QS I-GAUGE 2020

Engineering Programmes
 Accredited by **NBA**

NBA
 NATIONAL BOARD OF ACCREDITATION

ADVANCED & LEAD CERTIFIED
 QS I-GAUGE

ASIC ACCREDITATION SERVICE
 for
**INTERNATIONAL SCHOOLS,
 COLLEGES & UNIVERSITIES**

Continuing its legacy as a world-class institution,
 Sharda University has earned Membership status with ASIC, UK
 for its commendable areas of operation.

INSTITUTION'S INNOVATION COUNCIL
 Ministry of Education, India

MoE's INNOVATION CELL
 (GOVERNMENT OF INDIA)

SHARDA-IIC
 is listed among top 10 Universities
 FOR THE NORTH REGION (NRO)
 WITH 4-STAR RATING FOR THE YEAR 2020-21

★★★★

PROUD TO BE PLACED IN EXCELLENT BAND

ARIIA RANKING 2021

ARIIA
 ANNUAL RANKING OF INSTITUTIONS OF INTERNATIONAL ACCREDITED

RECOGNITIONS & APPROVALS BY GOVERNMENT INSTITUTIONS & REGULATORY BODIES



University Grants Commission (UG)

Department of Higher Education, Uttar Pradesh

Member of Association of Commonwealth Universities (ACU)

Member of Association of Indian Universities

National Medical Commission (NMC) Formally Medical Council of India (MCI)

Bar Council of India (BCI)

Dental Council of India (DCI)

Council of Architecture (COA)

Pharmacy Council of India (PCI)

National Council for Teacher Education (NCTE)

Indian Nursing Council (INC)

Accreditation Service for International Schools, Colleges & Universities (ASIC)

Among Asia's Greatest Brands 2017 by URS Media Consulting & Reviewed by Pricewaterhousecoopers

Sharda University is the ONLY university awarded by FICCI in the category of Excellence in Globalisation of Education

Awarded 'Excellence in the Field of Education' by ASSOCHAM 2016

Awarded Best Private University in India by National Education Excellence Awards - 2018

Awarded Most Internationally Diversified University in India at the International Education Excellence Awards 2019 by UNICA

SHARDA UNIVERSITY

UZBEKISTAN

The 1st independent International private university in Uzbekistan approved under special Presidential decree



Sharda University Uzbekistan has been established in line with Sharda's commitment to offer world class education to everyone. It is the first independent private university in Uzbekistan that is being envisioned to become the gateway for students from Eurasia. Students of Sharda University Uzbekistan share the legacy of Sharda, India's truly global university with 27% students from 95+ countries; which has over the years become one of the leading centres of education, research and innovation in Asia. In the next few years, the University will become the epicentre of future-focused education in various disciplines including Engineering, Management, Medical, Dental, Tourism and Hospitality, Law, Architecture, Design, Journalism & Mass Communication, Computer Applications, Basic Sciences, Nursing, Biotechnology, Food & Technology, Pharmacy, Physiotherapy, Paramedical, Education, Languages, Animation, Agriculture, Visual Arts and Stem Cell & Cancer Biology.



SHARDA UNIVERSITY

AGRA

Sharda University Agra carries forward the rich legacy of Sharda Group having its campuses in Mathura, Greater Noida & Uzbekistan. It is envisioned to become one of the leading centres of education, research and innovation.

Established under the Uttar Pradesh Private Universities Act, 2019 (U.P. Act no. 12 of 2019), Sharda University Agra offers 21+ UGC recognized programmes in various disciplines.

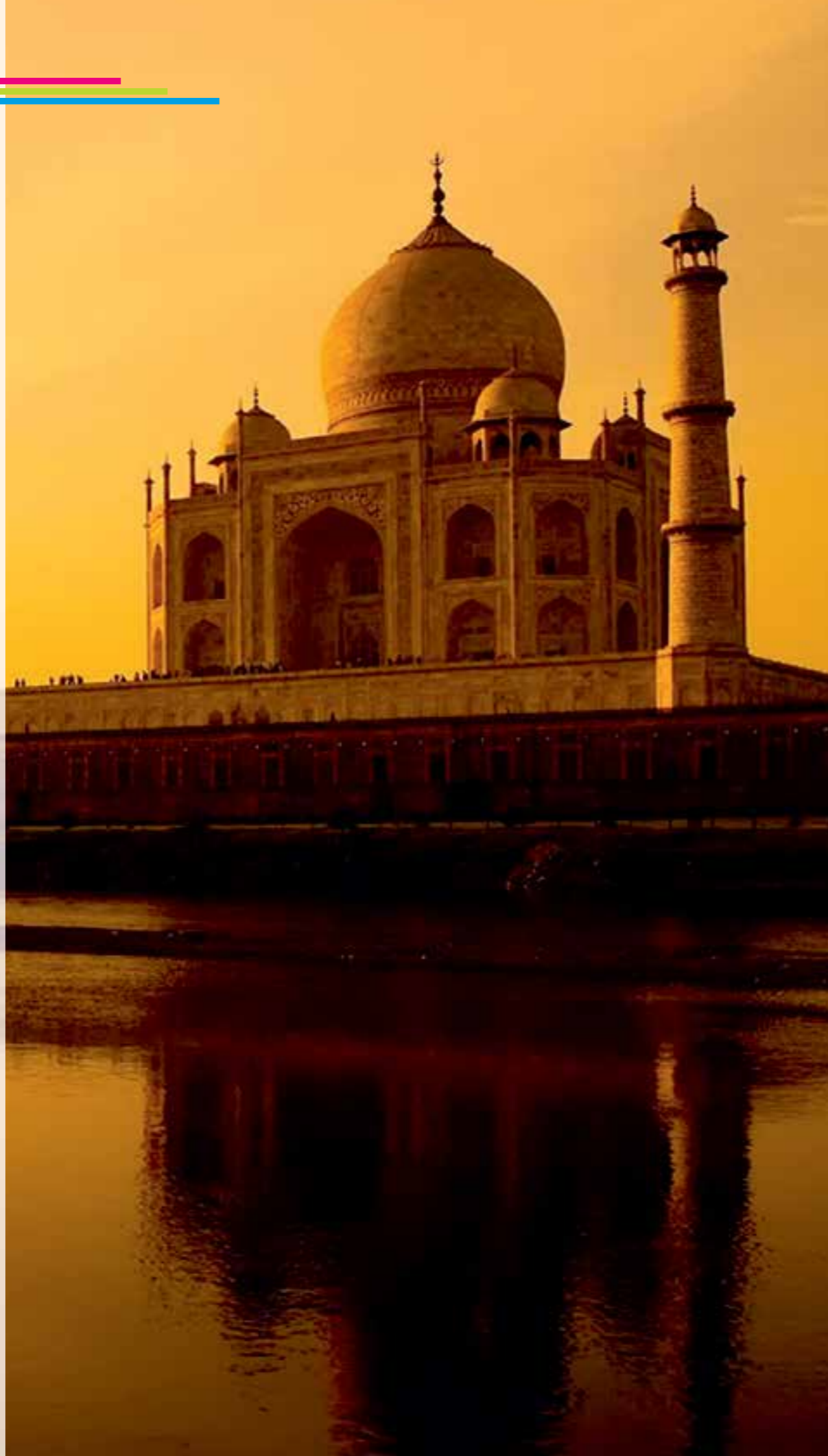
The Sharda University Agra occupies a central location on the NH-19, Agra-Delhi Highway, which is well connected from Delhi (NCR) to other parts of the country through Air, Rail and Road. The University is poised to cater some of the world's brightest minds who shall marshal the most innovative tools, techniques, technology and skills to address fundamental scientific questions and pressing societal challenges. University's extraordinary faculty and students shall be expanding their understanding of the universe and inventing the technologies of the future, with research interests from quantum science and engineering to bioinformatics and the nature of life itself, from human behavior and economics to energy and sustainability.



WHY INDIA?

India is an amalgamation of cultural diversity, innovation, and leadership. According to World Economy Ranking, India has attained the 5th largest economy in 2022. Some of the most prominent scientists, businessmen and CEOs are from India. This is because of the holistic education system that balances theory and practical learning, thus elevating the student to the global standard. India has the largest democracy that embraces people across all countries and ethnicities.

- **Fastest growing economy by World Bank, IMF & CSO.**
- **Second fastest growing service sector in the world by CII & KPMG.**
- **India is the 7th largest country in the world and the largest democracy.**
- **The second largest pool of engineers and scientists are from India.**
- **India has the largest education system with top-ranking Universities.**
- **A multidimensional Education system with a perfect blend of theoretical & practical learning that includes innovative classes, industrial visits, seminars and alumni meets to keep up with the latest trends in the industry.**
- **India is the second largest English-speaking country in the world, enabling worldwide communication.**
- **A land where diversity meets culture, cuisine, festivals, exotic locations, languages and people from different backgrounds.**
- **Affordable cost of living, The cost of education in India is lower compared to other countries such as USA, Australia, and UK.**
- **Various historical inventions have been discovered and practiced in India. From the invention of zero, fiber optics, and architecture to games such as Chess.**
- **Yoga, which is one the most widely accepted practices in the world, originated in India.**



28+ YEARS OF ILLUSTRIOUS LEGACY

Established in 1995, Sharda Corporation is a multi-million-dollar conglomerate which is focused on building a better world through business operations in diverse areas like Education, Healthcare, Information Technology, StartUps, Engineering Equipment, Construction, Biotechnology, Hospitality and Skill Development. The Group is proud to be one of the drivers of change in building a world where intellectual minds will thrive, everyone will have access to good health, edifices of excellence will define the skyline and new age IT solutions will set new benchmarks.

With five campuses and 40 offices spread across 300 acres, Sharda Corporation is proud to shape the dreams of 26000+ students from 95+ countries. A journey that started with establishing North India's first engineering colleges in Anand & Mathura took a bigger shape with the setting up of Sharda University.

Campuses in Greater Noida & Agra, India and Andijan, Uzbekistan.

The 90,000+ flag bearers of Sharda across the globe are an apt reflection of an illustrious legacy to think beyond. The Group is touching the lives of 15 million people and has operations in India, Uzbekistan and plans to expand further to the other CIS countries and Africa.



MDP MANAGEMENT DEVELOPMENT PROGRAM

(Capacity Building Programs)

The University has a management development program (capacity building programs) which is under the direction of the executive programs. Management Development Program (MDP) is carried out based on the latest management technologies and practices at the Sharda campus for Businesses, industry professionals and officials of different committees.

Sharda University is in collaboration with governments of several countries for capacity building programs. The university receives scholarship students from different countries such as: Burkina Faso, Ivory Coast, Ethiopia, Rwanda, Thailand, Gambia, Afghanistan, Vietnam, Bhutan, Sri Lanka, Malawi and Nigeria.



CENTER OF EXCELLENCE



CYBER SECURITY & CRYPTOLOGY

The aim is to provide a good blend of theory and industrial practice; necessary theoretical background, and insight into general & technical aspects of Cyber Security.

ARTIFICIAL INTELLIGENCE IN MEDICINE, IMAGING & FORENSICS

The AI centre plans to utilize the multidisciplinary advantage of the University, especially the medical data available from the School of Medical Sciences & Research, School of Dental Sciences & School of Allied Health Sciences in generating path-breaking research & applications of AI in medicine and healthcare.



SOLAR CELL AND RENEWABLE ENERGY

The center is taking long strides in Manufacturing Processes using the same waste plastic derived graphene carbon nanomaterial.

SHARDA UNIVERSITY YUNUS SOCIAL BUSINESS CENTRE

Sharda University Yunus Social Business Centre is a Centre of Excellence that seeks to promote the concept of Social Business. This may be achieved by undertaking academic programmes, such as social business courses and degrees, undertaking action-research & research activities, organizing local/global social business design labs, seminars, workshops and competitions for students, business communities, policymakers, NGOs, and philanthropic organizations.



CAFETERIAS



LEARNING SPACES



MEDICAL FACILITIES



GYMNASIUM



LIVELY ENVIRONMENT



LIBRARIES



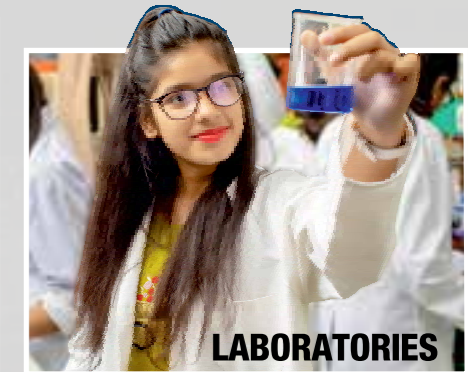
COMPUTER LAB



EXPLORE



LABORATORIES



AUDITORIUMS

*World in a campus »
Hi-Tech facilities
spread over 63 acres*

Sharda University campus combines modern teaching and study spaces on 63 acres of landscaped greenery. At Sharda, you can study in a clean, healthy environment that combines the benefits of an active global lifestyle with the resources of an international University.

When you want to work together & make new friends you'll find yourself in a welcoming community filled with people from over 95+ countries. Our campus includes academic support, accommodation, sports, culture & entertainment-everything you need.



SPORTS

IN-CAMPUS RESIDENCES



WORLD-CLASS INFRASTRUCTURE

YOUR **PASSPORT** **TO THE WORLD**

STUDY ABROAD

“ Find global learning opportunities through 270+ Global Academic Tie Ups. ”

PATHWAY TO FOREIGN DEGREES

CREDIT TRANSFER PROGRAM

From Sharda University to Partner Universities- Pathway to Foreign Degrees

Sharda University runs credit transfer agreements with several high-ranked international universities in the UK USA Australia France Cyprus Israel and Switzerland. Interested students can start their studies in Sharda University and transfer to the partner university in Year 1 or in Year 2 or in Year 3. Credit transfer students graduate with the degree of the partner university.

Credit transfer from Partner University to Sharda University

Students from other universities can transfer their credits from their home university to Sharda University. The student is required to pay tuition fees accommodation/food fees and registration and any other applicable fees. The student will graduate with a the degree from Sharda University.

SEMESTER EXCHANGE PROGRAM @ZERO TUITION FEE*

(Duration: One Semester)

In the semester exchange program Sharda University students and students from partner universities across the globe can transfer for one semester to the collaborating institution and vice versa. Sharda University students pay zero tuition fees in the partner universities. Credits of courses passed in the semester exchange will be transferred from Sharda University and vice versa after the courses have been mapped & approved in advance by both Sharda University & the partner universities.

INTERNSHIPS

(Duration: 1 to 2 Months)

In today's challenging economy, gainful internship counts a lot. Sharda's Internship abroad program provides a tremendous opportunity to gain invaluable work experience during your college break. During your international internship you will be placed in a field relevant to your studies. There you will have the chance to participate in the day-to-day work environment and use your abilities in a real-world setting. You can choose from 270+ partner universities for multi-disciplinary internships wherever available during that particular slot.

Benefits of Internship:

- Opportunity to apply classroom theory to real-world work experience
- Specific project/responsibilities and opportunities to learn about an organization's operations
- Supervisory support to the student in the pursuit of learning goals
- Fast track access to talent pipeline
- Learn a new skill or practice a skill you recently learned
- Experience a new sector of industry or work setting
- Explore an interesting career path

270+

TIE-UPS WITH LEADING GLOBAL UNIVERSITIES

- IQS-Ramon Lull University, Spain
- Babes Bolyai University, Romania
- Bishop Grosseteste University, UK
- American University of London - Richmond, UK
- University of Applied Sciences Bremerhaven, Germany
- Baden-Wuerttemberg Cooperative State University Lorrach, Germany,
- University of Cincinnati, USA
- University of Juiz de Fora, Brazil
- University of Zagreb, Croatia
- University of South Florida, USA
- Western Sydney University, Australia
- University of Cuenca, Equator
- University of East London, UK
- University of Queensland, Australia
- University of Ljubljana, Slovenia
- University of Illinois, USA
- University of Cyprus, Cyprus
- University of Applied Sciences Bremerhaven, Germany
- Polytechnic of Leiria, Portugal
- University of East Anglia, UK
- University of Sunderland, UK
- Shawnee State University, USA
- Queen Mary University of London, UK
- National Polytechnic Institute, Mexico
- University of Missouri, USA
- Mendel University, Czech Republic
- Manisa Celal Bayar University, Turkey
- University of Dubrovnik, Croatia
- Computer Engineering Institute, France
- University of Cordoba, Spain
- Curtin University, Australia
- Financial University, Russia
- Berdyansk State University, Ukraine
- Heriot Watt University, UK
- Myongji University, South Korea



and many more...

UPTO 50% SCHOLARSHIP AVAILABLE

GLOBALY RECOGNISED DEGREE PROGRAMS FOR A GLOBAL CAREER

SHARDA SCHOOL OF ENGINEERING & TECHNOLOGY

Courses	Duration (In Year)	Per Annum (USD)	Courses	Duration (In Year)	Per Annum (USD)
B.Tech Computer Science Engineering (CSE)	4	4000**	B.Sc. - (CS) - Cloud Computing & IoT	3	4000*
B.Tech (CSE) - Banking and Insurance	4	4000**	Master of Computer Applications (MCA)	2	5000*
B.Tech (CSE) - Data Science & Analytics in association with Oracle	4	4000**	MCA - (Artificial Intelligence and Machine Learning)	2	5000*
B.Tech (CSE) - Full Stack Development in association with Xebia Academic Alliance	4	4000**	M.Sc. - Computer Science	2	5000*
B.Tech (CSE) - Augmented & Virtual Reality	4	4000**	M.Sc. - Genetic Engineering	2	5000*
B.Tech (CSE) - Artificial Intelligence & Machine Learning	4	4000**	M.Sc. (CS) - (Artificial Intelligence and Machine Learning)	2	5000*
B.Tech (CSE) - Block Chain Technology	4	4000**	M.Tech Biotech - Animal Biotechnology	2	5000*
B.Tech (CSE) - Cyber Security & Forensic in association with MicroSoft	4	4000**	M.Tech Biotech - Plant Biotechnology	2	5000*
B.Tech (CSE) - Cloud Technology & Virtualization in association with AWS	4	4000**	M.Tech Biotech-Genetic Engineering	2	5000*
B.Tech (CSE) - Artificial Intelligence for IoT Applications in association with Aeris	4	4000**	M.Tech Bio-Engineering & Bio-Informatics	2	5000*
B.Tech (CSE) - Bioinformatics	4	4000**	M.Tech Food Process Technology	2	5000*
B.Tech Information Technology (IT)	4	4000**	M.Tech (CE) - Environmental Engineering	2	5000*
B.Tech Electrical and Electronics Engineering (EEE)	4	4000**	M.Tech (CE) - Structural Engineering	2	5000*
B.Tech (EEE) - Electric Vehicle Technology	4	4000**	M.Tech (CE) - Construction Management	2	5000*
B.Tech (EEE) - Specialization in Renewable Energy Systems	4	4000**	M.Tech (CE) - Geotechnical & Earthquake Engineering	2	5000*
B.Tech Electronics & Communication Engineering (ECE)	4	4000**	M.Tech (CE) - Remote Sensing & GIS	2	5000*
B.Tech (ECE) Electronics & Communication Engineering with Specialization in VLSI Design and Technology	4	4000**	M.Tech (CSE) - Networking & Cyber Security	2	5000*
B.Tech Electronics & Computer Engineering - AI and Machine Learning	4	4000**	M.Tech (CSE) - Software Engineering	2	5000*
B.Tech Electronics & Computer Engineering - IoT	4	4000**	M.Tech (CSE) - Data Science	2	5000*
B.Tech (ECE) Specialization in Robotics & Automation	4	4000**	M.Tech (EEE)- Instrumentation & Control	2	5000*
B.Tech Mechanical Engineering (ME)	4	4000**	M.Tech (EEE) - Industrial Automation	2	5000*
B.Tech (ME) Specialization in Automotive Electrical Vehicles	4	4000**	M.Tech (EEE)- Power System Engineering	2	5000*
B.Tech (ME) - Mechatronics	4	4000**	M.Tech (ECE) - Digital Communication	2	5000*
B.Tech Civil Engineering	4	4000**	M.Tech (ECE) - VLSI Technology	2	5000*
B.Tech Civil Engineering with minor in Computer Science & Engineering	4	4000**	M.Tech - Mechanical Engineering	2	5000*
B.Tech Bio Technology	4	4000**	Ph.D. in All Engineering Branches	3 (Min)	5000*
B.Tech (B.T) Genetic Engineering	4	4000**			
B.Tech Stem Cell & Tissue Engineering	4	4000**			
B.Tech Food Process Technology	4	4000**			
Bachelor of Computer Applications (BCA)	3	3000**			
BCA - Artificial Intelligence and Machine Learning	3	3000**			
BCA - Cloud Computing and IoT	3	3000**			
BCA - Cyber Security	3	3000**			
B.Sc. - Computer Science	3	4000*			
B.Sc. - (CS) - Cyber Security	3	4000*			
B.Sc. - Information Technology	3	4000*			
B.Sc. - (CS) - Artificial Intelligence and Machine Learning	3	4000*			

SHARDA SCHOOL OF BUSINESS STUDIES

Courses	Duration (In Year)	Per Annum (USD)
B.Com.	3	4500*
B.Com. (Hons./Research)	4	4500*
B.Com.Finance & Accounting with ICA	3	5000*
B.Com- International Accounting & Finance (with ACCA, UK)	3	5000*
BBA - Marketing Management	3	3400**
BBA - International Business	3	3400**
BBA - Human Resource Management	3	3400**
BBA - Banking & Finance	3	3400**
BBA - Health Care Management	3	3400**
BBA - Entrepreneurship & Family Business	3	3400**
BBA - Supply Chain Management & Logistics	3	3400**
BBA - (Hons./Research) Marketing Management	4	3400**
BBA - (Hons./Research) International Business	4	3400**
BBA - (Hons./Research) Human Resource Management	4	3400**
BBA - (Hons./Research) Banking & Finance	4	3400**
BBA - (Hons./Research) Health Care Management	4	3400**

**20% Assured Scholarship Available for all Years

*50% Assured Scholarship Available for all Years

Courses	Duration (In Year)	Per Annum (USD)
BBA - (Hons./Research) Entrepreneurship & Family Business	4	3400**
BBA - (Hons./Research) Supply Chain Management & Logistics	4	3400**
BBA - Finance & Accounts (with ACCA, UK)	3	3400**
M.Com.	2	3200*
MBA - Marketing Management	2	6000**
MBA - International Business	2	6000**
MBA - Human Resource Management	2	6000**
MBA - Banking & Finance	2	6000**
MBA - Business Analytics	2	6000**
MBA - Health Care & Hospital Administration	2	6000**
MBA - Entrepreneurship & Family Business	2	6000**
MBA - Supply Chain Management & Logistics	2	6000**
MBA - Dual Specialization	2	7000**
Executive MBA	18 mons.	3400**
MBA (Integrated)	4	4000**
Ph.D. in Management	3 (Min.)	5000*

SCHOOL OF NURSING SCIENCE & RESEARCH

Courses	Duration (In Year)	Per Annum (USD)
B.Sc. (Nursing)	4	3200**
B.Sc. (Post Basic Nursing)	2	3200
M.Sc. (Nursing) - Community Health Nursing	2	3600
M.Sc. (Nursing) - Obstetrics & Gynecology Nursing	2	3600
M.Sc. (Nursing) - Child Health Nursing (Paediatrics)	2	3600
M.Sc. (Nursing) - Medical Surgical Nursing	2	3600
M.Sc. (Nursing) - Psychiatric	2	3600
Ph.D. in Nursing	3 (Min)	5000*

SHARDA SCHOOL OF BASIC SCIENCES & RESEARCH

Courses	Duration (In Year)	Per Annum (USD)
B.Sc. - Physics	3	3400*
B.Sc. - Physics - Computational Physics	3	3400*
B.Sc. - Physics - Renewable Energy	3	3400*
B.Sc. (Hons./Research) - Physics	4	3400*
B.Sc. (Hons./Research) - Physics - Computational Physics	4	3400*
B.Sc. (Hons./Research) - Physics - Renewable Energy	4	3400*
B.Sc. - Mathematics	3	3400*
B.Sc. - Mathematics - Computational Mathematics and Statistics	3	3400*
B.Sc. (Hons./Research) - Mathematics	4	3400*
B.Sc. (Hons./Research) - Mathematics - Computational Mathematics and Statistics	4	3400*
B.Sc. - Chemistry	3	3400*
B.Sc. (Hons./Research) - Chemistry	4	3400*
B.Sc. Chemistry - Computational Chemistry	3	3400*
B.Sc. (Hons./Research) - Chemistry - Computational Chemistry	4	3400*
B.Sc. - Zoology	3	3400*
B.Sc.(Hons./Research) - Zoology	4	3400*
B.Sc. - Bio Chemistry	3	3800*
B.Sc. (Hons./Research) - Bio Chemistry	4	3800*
B.Sc. - Biotechnology	3	3800*
B.Sc. (Hons./Research) - Biotechnology	4	3800*

**20% Assured Scholarship Available for all Years

Courses	Duration (In Year)	Per Annum (USD)
B.Sc. - Data Science & Analytics	3	3400*
B.Sc. (Hons./Research) - Data Science & Analytics	4	3400*
B.Sc. - Microbiology	3	3800*
B.Sc. (Hons./Research) - Microbiology	4	3800*
B.Sc. - Food Science & Technology	3	3800*
B.Sc. (Hons./Research) - Food Science & Technology	4	3800*
B.Sc. - Environmental Science	3	3800*
B.Sc. (Hons./Research) - Environmental Science	4	3800*
M.Sc. - Biotechnology	2	5000*
M.Sc. - Biochemistry	2	5000*
M.Sc. - Chemistry	2	5000*
M.Sc. - Mathematics	2	5000*
M.Sc. - Physics	2	5000*
M.Sc. - Food Science & Technology	2	5000*
M.Sc. - Microbiology	2	5000*
M.Sc.- Data Science & Analytics	2	5000*
M.Sc. - Water Resources & Environmental Management	2	5000*
M.Sc. - Environmental Science	2	5000*
Ph.D. in All Basic Sciences	3 (Min)	5000*

SHARDA SCHOOL OF ALLIED HEALTH SCIENCES

Courses	Duration (In Year)	Per Annum (USD)
Bachelor of Physiotherapy (BPT)	4+0.5	3600**
B.Sc. in Radiological Imaging Techniques (Radiology/CT/MRI)	3+0.5	3200**
B.Sc. in Medical Laboratory Technology (Techniques) (BMLT)	3+0.5	3200**
B.Sc. - Cardiovascular Technology	4	3200**
B.Sc. - Forensic Science	3	3200**
Bachelor of Optometry	4	3200**
Bachelor of Science (Nutrition & Dietetics)	3	3200**
Master of Physiotherapy (MPT) - Orthopaedics	2	4000**
Master of Physiotherapy (MPT) - Neurology	2	4000**
Master of Physiotherapy (MPT) - CardioPulmonary	2	4000**
Master of Physiotherapy (MPT) - Sports	2	4000**
M.Sc. (Clinical Research)	2	5000*
M.Sc. (Forensic Science)	2	5000*
M.Sc. (Nutrition & Dietetics) Clinical Nutrition	2	5000*
M.Sc. (Nutrition & Dietetics) Food Science & Nutrition	2	5000*
M.Sc. (Nutrition & Dietetics) Public Health Nutrition	2	5000*
Diploma in Clinical Medical Practice	3	3200**
Ph.D. in Allied Health Sciences	3 (Min)	5000*

SHARDA SCHOOL OF LAW

Courses	Duration (In Year)	Per Annum (USD)
BBA LL.B.(Hons.) Integrated	5	3600**
B.A. LL.B.(Hons.) Integrated	5	3600**
LL.M. - Corporate & Commercial Law	1	3400**
LL.M. - Human Rights Law	1	3400**
LL.M. - International Law	1	3400**
LL.M. - Criminal Law	1	3400**
Ph.D. in Law	3 (Min)	5000*

*50% Assured Scholarship Available for all Years

SHARDA SCHOOL OF MEDIA FILM & ENTERTAINMENT

Courses	Duration (In Year)	Per Annum (USD)
B.A - Film, Television & OTT Production Production	3	3400**
B.A (Hons./Research)- Film, Television & OTT Production Production	4	3400**
B.A. - Journalism & Mass Communication	3	3400**
B.A. (Hons./Research)- Journalism & Mass Communication	4	3400**
B.Sc. - Animation,VFX & Gaming Design	3	3400**
B.Sc. (Hons./Research) - Animation,VFX & Gaming Design	4	3400**
M.A. - Journalism & Mass Communication	2	3400**
M.A. - Advertising, Public Relations and Corporate Communication	2	3400**
Ph.D. in Mass Communication	3 (Min)	5000*

SHARDA SCHOOL OF HUMANITIES & SOCIAL SCIENCES

Courses	Duration (In Year)	Per Annum (USD)
B.A - English	3	3800*
B.A. (Hons./Research) - English	4	3800*
B.A. - History	3	3800*
B.A. (Hons./Research) - History	4	3800*
B.A.- Political Science	3	3800*
B.A.- Political Science spc. In International Relations	3	3800*
B.A.- (Hons./Research) Political Science spc. In International Relations	4	3800*
B.A. (Hons./Research)- Political Science	4	3800*
B.A. - Sociology	3	3800*
B.A. (Hons./Research)- Sociology	4	3800*
B.A. - Psychology	3	3800*
B.A. (Hons./Research)- Psychology	4	3800*
B.A. - Geography	3	3800*
B.A. (Hons./Research) - Geography	4	3800*
B.A.- Economics	3	3400*
B.A. (Hons./Research)- Economics	4	3400*
M.A. - English	2	3400*
Master of Arts - Modern History	2	3800*
Master of Arts - Political Science	2	3800*
Master of Arts - Political Science sp in International Relations	2	3800*
Master of Arts - Sociology	2	3800*
Master of Arts - Clinical Psychology	2	3800*
Master of Arts - Applied Psychology	2	3800*
Master of Arts - Economics	2	3800*
Advance Certificate of Proficiency (English)	1	3000*

Courses	Duration (In Year)	Per Annum (USD)
Certificate of Proficiency in English	6 Mons.	1000
Basic Certificate of Proficiency in English Language	3 Mons.	800
Ph.D. in Humanities & Social Sciences	3 (Min)	5000*

SCHOOL OF DESIGN ARCHITECTURE & PLANNING

Courses	Duration (In Year)	Per Annum (USD)
Bachelor of Architecture (B.Arch.)	5	5000*
Bachelor of Visual Arts (Applied Arts)	4	3200*
Bachelor of Design (Communication Design)	4	4000**
Bachelor of Design (Interior Design)	4	4000**
Bachelor of Design (Fashion Design)	4	4000**
Masters in Design - Interior Design	2	6000*
Masters in Design - Fashion Design	2	6000*
Ph.D. in Architecture	3 (Min)	5000*
Ph.D. in Design	3 (Min)	5000*

SCHOOL OF PHARMACY

Courses	Duration (In Year)	Per Annum (USD)
Pharm D	5+1	6000**
Bachelor of Pharmacy (B.Pharma)	4	4000
Diploma in Pharmacy (D.Pharma)	2	2500
M. Pharm (Pharmaceutics)	2	3400**
Ph.D. in Pharmacy	3 (Min)	5000*

SHARDA SCHOOL OF MEDICAL SCIENCES & RESEARCH

Courses	Duration (In Year)	Per Annum (USD)
Msc. Medical Anatomy	3	4000**
Msc. Medical Bio Chemistry	3	4000**
Msc. Medical Microbiology	3	4000**
Msc. Medical Pharmacology	3	4000**
Msc. Medical Physiology	3	4000**

SCHOOL OF DENTAL SCIENCES

Courses	Duration (In Year)	Per Annum (USD)
Bachelor of Dental Surgery (Dentistry)	4 + 1	6000
Master of Dental Surgery (MDS) in various specializations	3	12000
Ph.D. in Dental Sciences	3 (Min)	5000*

Admission on the basis of NEET

ADDITIONAL FEES

Admission and Procedural Charges - USD 500 which includes Provisional Admission Fee Visa letter/Bonafide Letter Charges 1st year Examination Fee 1st year Registration Fee 1st year Medical Insurance Charges 1st year Medical Check up Charges AIU certification /equivalence assistance only FRRO/Police verification/ Visa Extension Assistance only.

2nd Year Onwards - USD 250 which includes Registration Fee Examination Fee Medical Insurance Renewal Charges FRRO/ Visa Extension Assistance.

**20% Assured Scholarship Available for all Years

*50% Assured Scholarship Available for all Years

HOSTEL FEE

For Girls Category

Room Type	Annual Fee
2 Seater AC Room with Non-Veg Food (Attached Washroom & Without Balcony)	USD 4000
2 Seater Non-AC Room with Non-Veg Food (Attached Washroom & Without Balcony)	USD 3000
3 Seater AC Room with Non-Veg Food (Attached Washroom & Balcony)	USD 3300
3 Seater Non-AC Room with Non-Veg Food (Attached Washroom & Balcony)	USD 2500

For Boys Category

Room Type	Annual Fee
2 Seater AC Room with Non-Veg Food (Attached Washroom & Without Balcony)	USD 4000
2 Seater AC Room with Non-Veg Food	USD 3250
2 Seater Non-AC Room with Non-Veg Food (Attached Washroom & Without Balcony)	USD 3000
2 Seater Non-AC Room with Non-Veg Food	USD 2450
3 Seater AC Room with Non-Veg Food	USD 3050
3 Seater Non-AC Room with Non-Veg Food	USD 2300

Note:

- Hostel Security of USD 200 (Refundable) for Non-AC and Non-Attached washroom and USD 300 (Refundable) for AC and/or attached washroom.
- Complimentary Laundry service of 20 washes and each wash of 8 kg shall be available to all the inside campus hostel residents.
- The room will be allotted on first come first serve basis after payment of hostel fee.
- For more hostel option details kindly visit "Accommodation Fee" section of university website.

*Hostel fees may differ, For more details please refer Website.

FEE DEPOSIT DETAILS

All International/Foreign Nationals/NRI students are advised to deposit/remittance their fees in the bank as per details mentioned below:

BENEFICIARY BANK NAME & ADDRESS



For Payment in USD

ICICI Bank Details:

Krishna Apra Royal Plaza D2 EAcB Alpha 1
Greater Noida Uttar Pradesh-201306 India

Account No:- 025406000017

Swift Code:- ICICINBBCTS | IFSC Code:- ICIC0000254



For Payment in INR

ICICI Bank Details:

Krishna Apra Royal Plaza D2 EAcB Alpha 1
Greater Noida Uttar Pradesh-201306 India

Account No:- 025405005507

Swift Code:- ICICINBBCTS | IFSC Code:- ICIC0000254

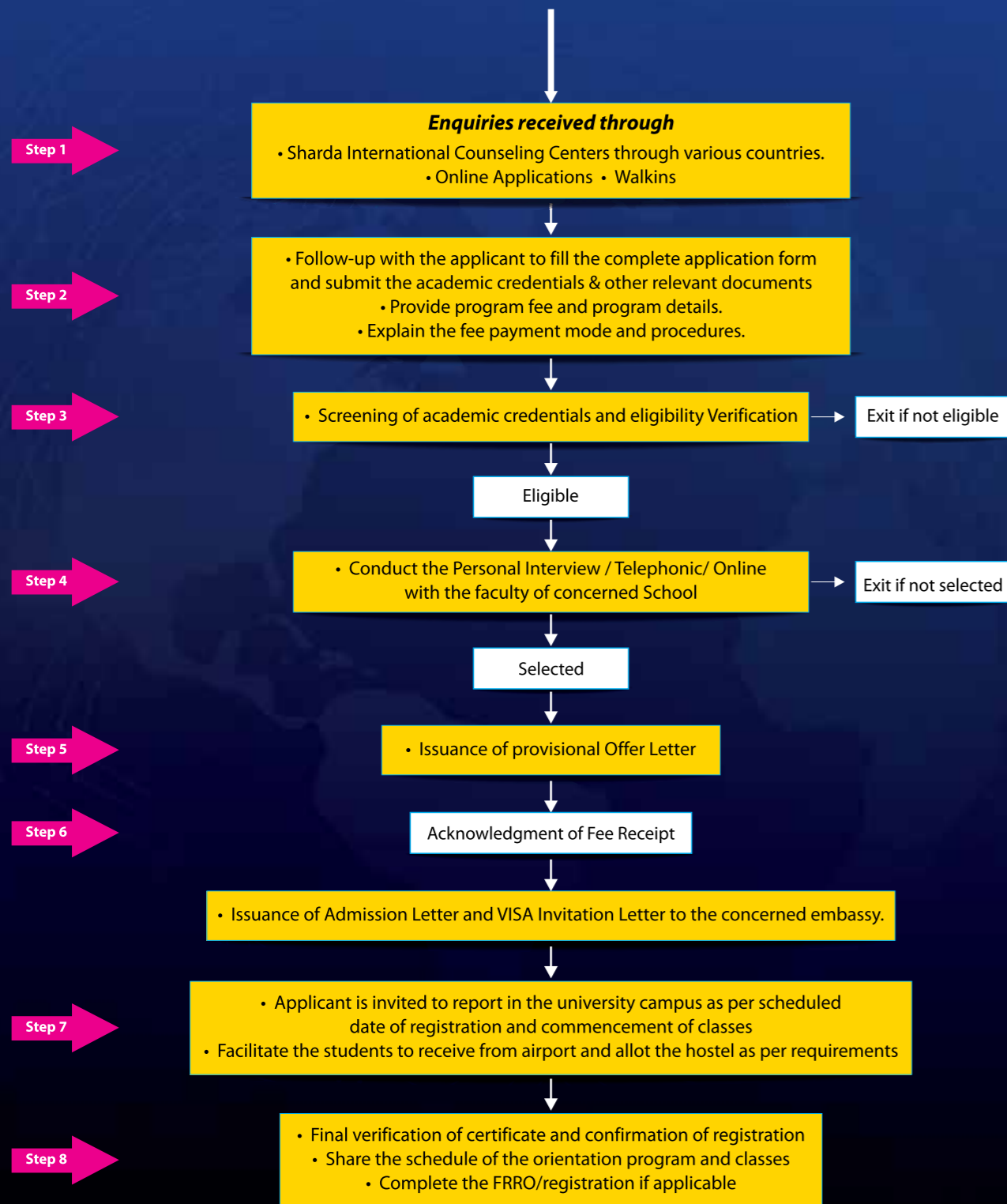
Note: International Students are advised to submit below details at su.finance.info@sharda.ac.in and global@sharda.ac.in after remitting the fund in the University account to get timely credit for their fee payments with the below details:

• System ID • Student Name • Program • Email ID • Contact no • Amount remitted in Foreign Currency • Swift Advice*

*Swift advice is the documentary evidence about the confirmation of the remittance of funds which will be issued by the remitter bank to the applicant. Bank deposit slip is not a proper document to confirm the payment with the bank.



ADMISSION FLOW CHART



List of Required Documents:

- Secondary/10th/ O-Level Marksheet.
- Senior Secondary/12th/ A-Level Marksheet.
- Bachelor's degree and transcripts (If

applying for Masters' program).

- Passport copy or National ID
- Filled Application Form

Age Criteria:

As per University Academic Council and in accordance with UGC Guidelines.

OR



ONLINE ADMISSION:

- Fill the application form available on the website under the tab "Apply Now"
- Upload the supporting academic documents & submit the filled application form.
- Kindly note you have entered the correct email address as the same will be used for further communication.



WALK-IN ADMISSION:

(Sharda University Campus & Counseling Centers in Various Countries)

- Get fee details
- Fill the Common Admission form with photo
- Submit all the relevant educational transcripts & certificates along with the filled in admission form



If eligible, Personal/Telephonic/ Skype interview if ineligible, the best possible course shall be suggested.



Post Selection, the University shall issue the offer letter & the same will be sent on your registered email Id.



Payment of USD 500 by the student by Bank transfer or payment at the University Campus.



After confirmation of payment, the University shall issue the acceptance Letter & bonafide for Visa process.



Clearance of the pending fees within the stipulated time period.



Post- arrival Registration process at the University campus.



Commencement of Classes.



Eligibility Verification and equivalence.

HOW TO APPLY

Sharda University



SHARDA LAUNCHPAD FEDERATION

HOSPITAL & MEDICAL COLLEGE

Sharda Launchpad Federation a sec 8 entity established in year 2013 promoted by Sharda University aims to support the shared vision of Government of India and University towards building a bit more vibrant culture of innovation and entrepreneurship for campus, city and nation. With a house of thousands of learners, researchers, academicians and practitioners of several disciplines of learning, Sharda Launchpad Federation as a dedicated professional platform enables potential individuals, teams and early stage start-ups to access need based resources, domain expertise, Technology and business mentorship, vast entrepreneurial stakeholders network and a dynamic ecosystem to advance the entrepreneurial journey and build scalable market ready sustainable ventures of future.

SLPF as an entrepreneurial ecosystem is a dedicated facility with approx. 7000 sq.ft of area, contemporary working space with necessary technology infrastructure led by a dedicated full time leadership team to consistently advance the purpose of the incubator and design platforms to encourage, mentor and support promising ideas/early stage start-ups. The incubator as an entrepreneurial ecosystem, is working towards expanding to sector agonistic support system though prime focus areas of start up support are-Agriculture, Healthcare, Drones, EV's, Block Chain, IoT Application and SDG aligned innovations.

Ecosystem partners and associates

The incubator is widely connected to vast pool of internal and external ecosystems, organisations, Experts, Mentors, Investors and Funds to accelerate the start-up success.

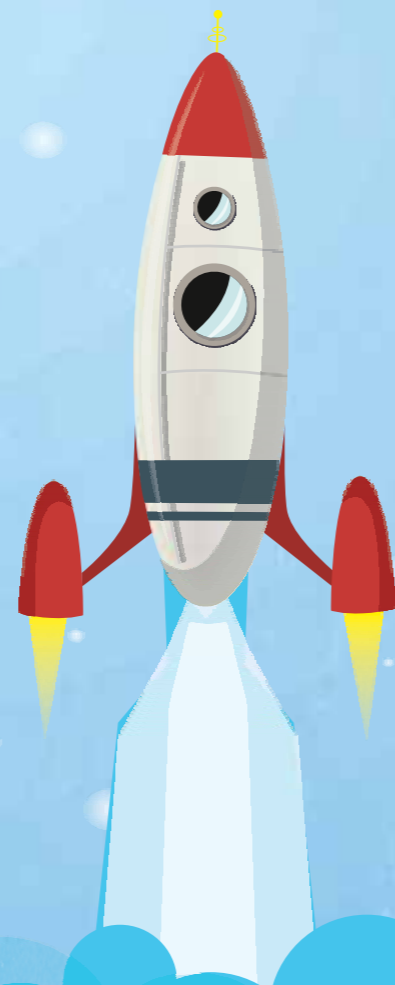
ECOSYSTEM PARTNERS



Learn more about current projects stakeholders and programmes at <https://launchpad.sharda.ac.in/events-list>



AN EARLY STAGE INCUBATOR AND
ENTREPRENEURIAL ECOSYSTEM



1600+ BEDDED SUPER SPECIALITY HOSPITAL & MEDICAL COLLEGE



Sharda Hospital is one of the largest hospitals in Delhi National Capital Region (NCR) which offers medical care par excellence to the patients at the most affordable cost. The hospital has 1200+ beds including casualty, trauma, critical care and various intensive care units like ICCU, CTVS ICU, MICU, SICU, PICU, NICU.

Sharda Hospital provides comprehensive healthcare in departments such as Cardiology, Cardiothoracic Surgery, Neurosciences, Joint Replacement, Spine Surgery, Orthopaedics, Urology, Nephrology, advance Ophthalmological and Dental surgeries including Maxillofacial and Craniofacial surgeries and Gastroenterology besides all the other general specialities. It also provides comprehensive physiotherapy and rehabilitation services.

Sharda Hospital's International Patient Services Department provides best of the hospitality and care to the international patients with a specially dedicated floor brimming with internationally accredited medical facilities.

SUPER SPECIALITY

- DEPARTMENT OF NEURO SCIENCES
- DEPARTMENT OF CARDIOLOGY
- DEPARTMENT OF ORTHOPEDIC & JOINT REPLACEMENT
- DEPARTMENT OF ONCOLOGY & ONCOSURGERY
- DEPARTMENT OF NEPHROLOGY
- DEPARTMENT OF UROLOGY
- DEPARTMENT OF OBSTETRICS & GYNAECOLOGY
- DEPARTMENT OF INFERTILITY (IVF)
- DEPARTMENT OF PLASTIC & AESTHETIC SURGERY
- DEPARTMENT OF DENTAL SCIENCES
- DEPARTMENT OF GASTROENTEROLOGY
- DEPARTMENT OF CRITICAL CARE & ANAESTHESIOLOGY
- DEPARTMENT OF MINIMAL ACCESS SURGERY
- DEPARTMENT OF OPHTHALMOLOGY & PHACO SURGERY
- DEPARTMENT OF INTERNAL MEDICINE

 1600+ BEDDED
SUPERSPECIALITY HOSPITAL

 10 MODULAR
OPERATION THEATERS

 100,000+
SURGERIES

 300,000+
IPD ADMISSIONS

 2 MILLION+
CONSULTATIONS

 DEDICATED TEAM FOR
INTERNATIONAL PATIENTS



Shining STARS OF SHARDA

Sharda University's brilliance in education over the years has resulted in its Alumni being placed in top-tier corporations around the world.

Embark on a journey through the illustrious alumni hall of fame at Sharda University, where brilliance knows no bounds. From pioneers in technology to trailblazers in business, our alumni stand as beacons of success, illuminating the path for future generations.

Explore the narratives of our shining stars who have soared to remarkable heights, leaving an indelible mark on their respective fields and the world at large.



Ahsanullah Mohammad Akba
Finance Assistant, AADA Kabul
Afghanistan



Norbu Jamtsho
Bhutan Civil Service
Bhutan



Bannah M. Bestman
National Public Health
Institute of Liberia
Liberia



Salma Jamal Mohamed
Maxaas General Hospital
Somalia



Karma Dema
Bhutan Civil Service
Bhutan



Paul Dominic Jarry Jr
RTI International
Liberia



Bwalya C Mayoshi
Mopani Copper Mines Plc
Zambia



Ariel Kalenga
DT Engineer, Huawei
Democratic Republic of Congo



Sona Suwal
Ministry of Water Supply
Nepal



Plezzant C Johnson
Fortune Ventures Inc
Liberia



Innocent Barnet Mijoya
Malawi Adventist University
Malawi



Womba Lukama
Liquid Intelligent Technologies
Zambia



Aissatou Diallo
Access Bank Guinée
Guinea



Clarence Erenes Gandawa
Springfield Research University
Zimbabwe



Abdoul Moumouni Sawadogo
Greenverse pvt.Ltd
Burkina Faso



Umar Mohammed Abatcha
Ict Skills Traning School
Gashua, Yobe State
Nigeria



Leah Y. Nsemwa
Universal Tribes
Tanzania



Ruby Belbase Chhetri
Padma Media Group
Nepal



Ujjawal Devkota
Nic Asia Bank
Nepal



Dr. Bahrullah Saif
VP, Acacia University,
Arizona



Radji Fatim
TELUS Health | TELUS Santé
Cote D'Ivoire



Seraphiner John Gao
Financial Analyst
Tanzania



Mangani Daudi Kazembe
Cyber Security Officer
Malawi



Yashaswee Thapa
Associate Advocate
Nepal



Ajeet Tiwari
China Commu. Construction
Nepal



Mamoudou Korse Balde
International Organization
Guinea



Sudikshya Timalina
Vogue Optical London
Canada



Galay Samprud
Royal Civil Service Commission
Bhutan

The Stars
Keep Shining at
**Sharda @Global
Higher Education**



Miyanda Shamba
Zambia
University Of Ankara In Ankara, Turkey



Nassor Suleiman Nassor
Tanzania
NFSU, India



Mohammad Erfan Sharifi
Afghanistan
Loughborough University, UK



Pudensiana Patrick Nsangizyo
Tanzania
IIIT Hyderabad, India



Delwende Pierre Wilfried Nacoulma
Burkina Faso
Carleton University, Canada



Ngonidzashe Mathew
Zimbabwe
Federation University, Australia



Jaymina Murdamootoo
Mauritius
Pondicherry University, India



Neksumi Musa
Nigeria
Federal University Of
Technology Yola, Nigeria



Samiratou Bonkougou
Burkina Faso
Université De Sherbrooke, Canada



Sonam Tshering Lama
Nepal
Macquarie University, Australia



Vibudana K. Samarawickrama
Sri Lanka
AIBT, Bangladesh

How to Reach Us

Sharda University is easily accessible as it is located on the Noida Expressway, (Uttarpradesh) and is well connected by rail and road; having a reasonable distance from the airports, bus stands, railway stations etc.

From New Delhi Airport (Distance 52 Km Approx.)

- Option 1:** Hire a taxi/Cab for Sharda University Campus
Plot No. 32,34, Knowledge Park-III, Greater Noida(Delhi-NCR)
-
- Option 2:**
- Catch a direct Metro train from Airport terminal 1 metro station to Botanical Garden Metro Station.
 - Get down at Botanical Garden metro station and take a bus for pari chowk from outside station
 - Get down at pari chowk and take an autorickshaw for Sharda University



Scan the QR Code to Get the Location





📍 Plot No. 32, 34, Knowledge Park-III, Greater Noida (Delhi-NCR) India

☎️ +91-8448896176, +91-8800998881

✉️ global@sharda.ac.in 🌐 www.sharda.ac.in

FOR MORE INFORMATION ON ADMINISTRATION PROCEDURES



SCAN AND APPLY

Follow us on Social Media platforms



Disclaimer: All material in this brochure is the copyright of Sharda University. The University makes every effort to ensure that all the information contained here is accurate. The information and material contained in these pages, and the terms, conditions and descriptions therein are subject to change as the Information Brochure has been prepared well in advance. Please note the updated information available on the University Website before you make any informed decision.